



Carnation Way, SW8

£3,866,000

Dexters



Carnation Way, SW8

A three bedroom, two bathroom apartment on the 48th floor with River & City views. Thames City is a landmark building, right in the heart of Nine Elms with incredible amenities and stunning views across London.

Facilities include gymnasium, 30m swimming pool and spa, cinema room, business centre, kids' club, 24-hour concierge, video door entry/intercom to the concierge, on-site security with CCTV footage, and private residents' entrance lobby.

* Please Note - Show Home Photography From The Development Has been Used *

Thames City is conveniently located for transport via Vauxhall Underground (Victoria Line) and Overground with the many facilities of Battersea Power Station right around the corner. Green open spaces are easily accessible at both Vauxhall & Battersea Park.

Features

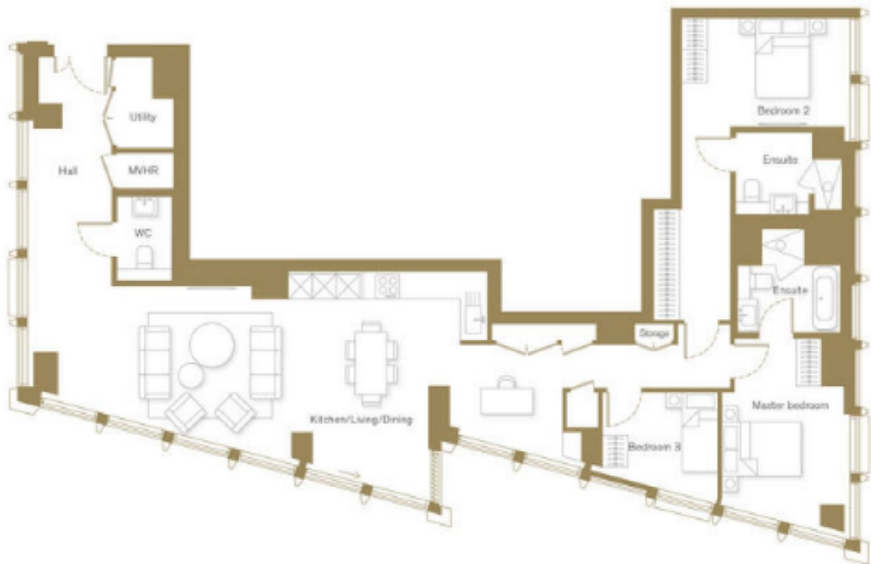
- Swimming Pool/Gym
- Three Bedrooms
- Two Bathrooms
- Incredible Location - Nine Elms
- Close To Transport - Vauxhall
- Green Open Spaces Nearby





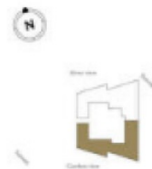


Carnation Way, Vauxhall, SW8



Apartment 48.02 Level 48

3 bedroom	144.03 sq m/1,559 sq ft
Kitchen/living/dining	10.89 x 4.37m 35' 9" x 14' 4"
Primary bedroom	4.66 x 3.24m 15' 3" x 10' 8"
Bedroom 2	4.26 x 2.73m 13' 11" x 8' 12"
Bedroom 3	2.91 x 2.44m 9' 7" x 7' 12"



Thamescity.com

All plans and dimensions are indicative only and must not be relied upon as being a true or accurate depiction of the relevant space or area. Specifications, including measurements, dimensions, sizes and distances are approximate only and subject to change at any time without notice. Please note that the units come in different sizes and configurations depending on location within the building.

Dexters

New Homes South London
12 The Broadway
London
SW19 1RF
Sales
020 8674 4555

Energy Rating: . We aim to make our particulars both accurate and reliable. However they are not guaranteed; nor do they form part of an offer or contract. If you require clarification on any points then please contact us, especially if you're traveling some distance to view. Please note that appliances and heating systems have not been tested and therefore no warranties can be given as to their good working order.



dexters.co.uk