



Chatfield Road, SW11

£725,000

**** Launching Saturday 3rd May - Please call 020 8674 4555 to view ****

A two bedroom, two bathroom newly built apartment with a private terrace that has river views located on the fifth floor. This well laid out property has 775 square feet of living space as well as the terrace. There is underfloor heating throughout too.

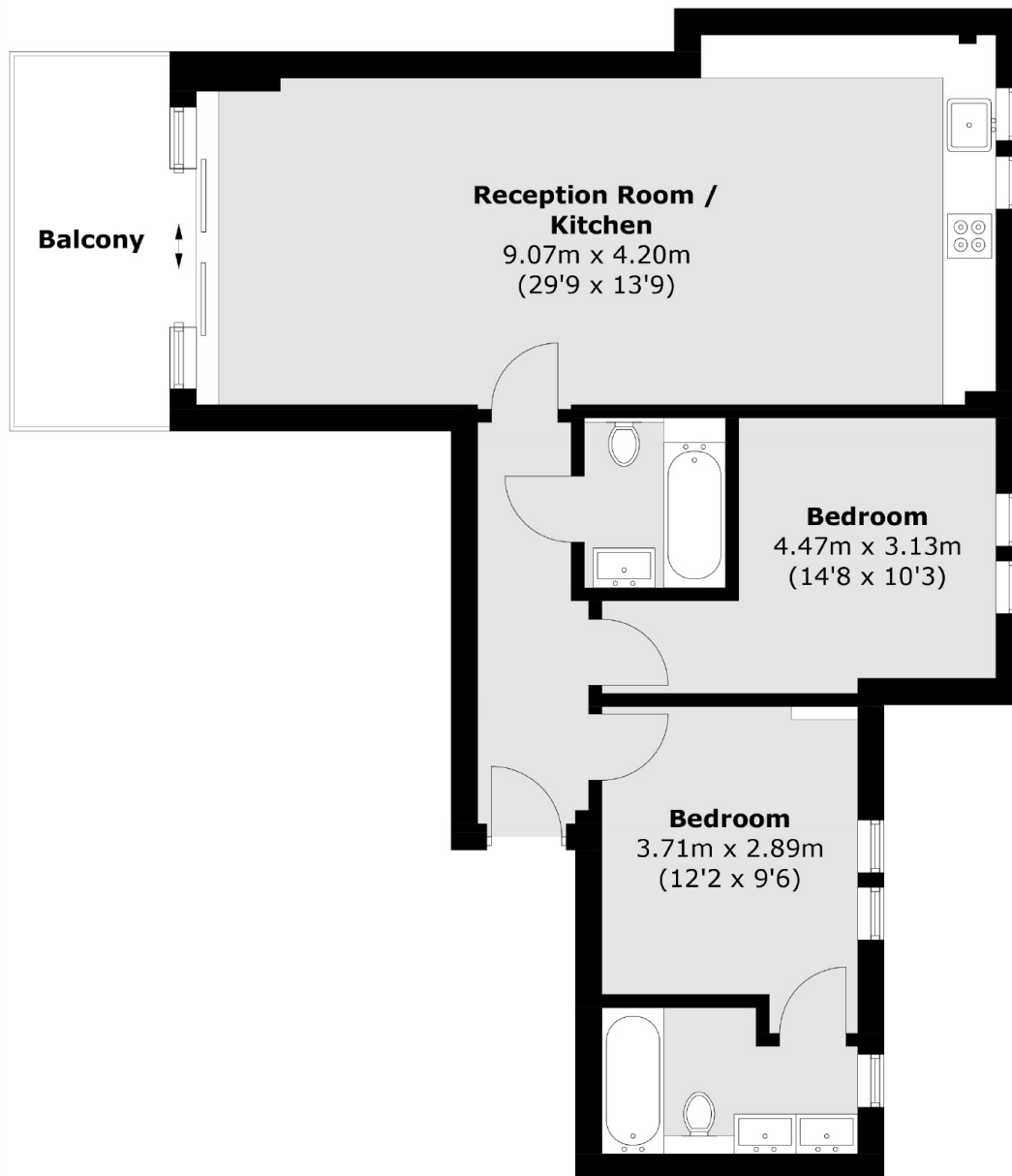
Please note - Whilst every effort has been made to accurately portray the development, CGI images have been used, alongside indicative floorplans produced from the planning documents.

Chatfield Road is conveniently located on the south of the River Thames. Enjoy long walks along the banks of the River Thames, jump on a uber boat, to see London's landmarks on your journey. There is quick and direct access via Clapham Junction Station just moments

Features

- Two Bedrooms
- Two Bathrooms
- Terrace With River Views
- Underfloor Heating
- German Appliances
- Quartz Worktops

Chatfield Road, Battersea, SW11



Fifth Floor

Total area (approx.): 72.0 sq. m (775.0 sq. ft)
Balcony area: 7.4 sq. m (79.6 sq. ft)

Dexters

New Homes South London
12 The Broadway
London
SW19 1RF
Sales
020 8674 4555

Energy Rating: . We aim to make our particulars both accurate and reliable. However they are not guaranteed; nor do they form part of an offer or contract. If you require clarification on any points then please contact us, especially if you're traveling some distance to view. Please note that appliances and heating systems have not been tested and therefore no warranties can be given as to their good working order.

 **RICS** | Regulated
Estate Agent
and Letting Agent

dexters.co.uk