

Portland Road, SE25

£299,000

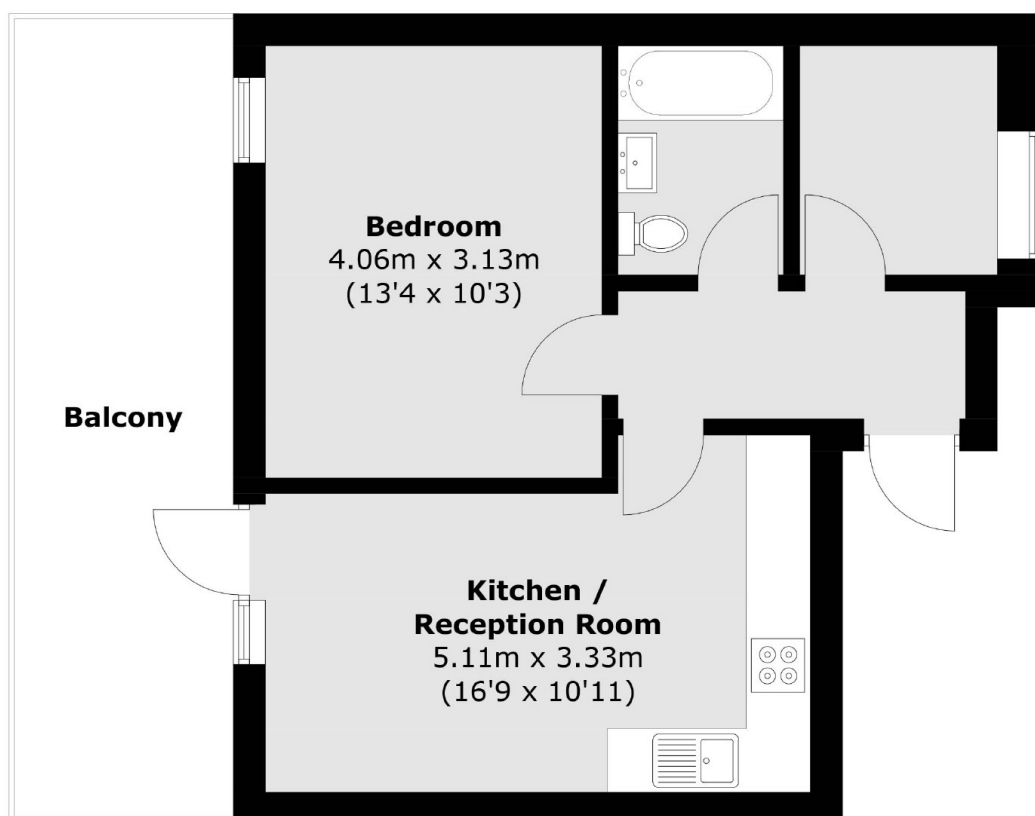
A one bedroom apartment with separate study area and a private balcony facing over the rear of the building. The spacious layout boasts a high-specification finish, brand-new alliances and is ultimately ready for immediate occupation.

South Norwood is a popular and convenient location in South-East London and is bordered by areas like Crystal Palace, Dulwich & Herne Hill. Norwood Junction Station is just 0.2 miles away with easy and regular access to London Bridge & Shoreditch.

Features

- One Bedroom
- Open Plan Kitchen/Reception
- Built In Wardrobes
- New Build Apartment
- High End Finish
- 999 Year Service Charge
- Low Running Costs
- Separate Study.

Portland Road, Norwood Junction, SE25



Third Floor

Total area (approx.): 41.7 sq. m (448.8 sq. ft)
Balcony area (approx.): 15.4 sq. m (165.8 sq. ft)