



Meadowview Road, SW20

£460,000

The size and layout of a two bedroom apartment, just with the quite unique layout of having a double lounge/living space/dining room area. The apartment could be, subject to the necessary consents, be converted into a two bedroom apartment.

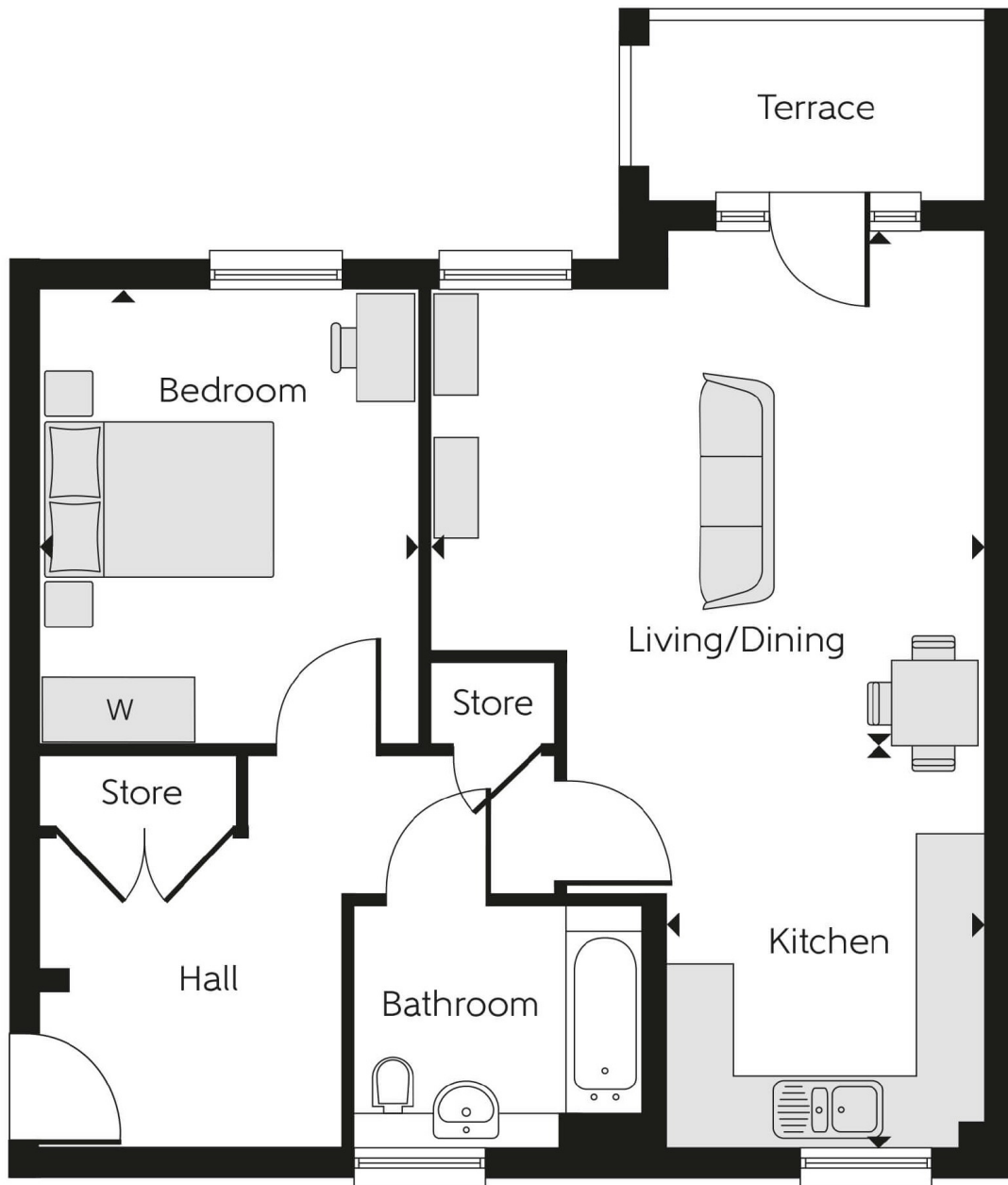
The Plumbe is a wonderful 1-bedroom apartment which features one double bedroom with plentiful wardrobe space, an open-plan kitchen, living, and dining area with a charming terrace, and a modern bathroom.

Cavendish Grove is a modern development of homes and apartments in Raynes Park, London. Offering a mix of 1- and 2-bedroom, plus 3- and 4-bedroom homes, this precisely planned community is sure to appeal to a range of potential homebuyers, including first-time buyers, families, young professionals, and London commuters.

Features

- 10 Year NHBC Buildmark
- One Double Bedroom
- Large Private Terrace
- Walking To Raynes Park
- Near to Wimbledon
- Near to David Lloyd Gym
- 999 year Lease
- 762 Square Foot

Meadowview Road, Raynes Park, SW20



Dexters

New Homes South London
12 The Broadway
London
SW19 1RF
Sales
020 8674 4555

Energy Rating: . We aim to make our particulars both accurate and reliable. However they are not guaranteed; nor do they form part of an offer or contract. If you require clarification on any points then please contact us, especially if you're traveling some distance to view. Please note that appliances and heating systems have not been tested and therefore no warranties can be given as to their good working order.

 **RICS** | Regulated
Estate Agent
and Letting Agent

dexters.co.uk