



Rural Way, SW16

£750,000

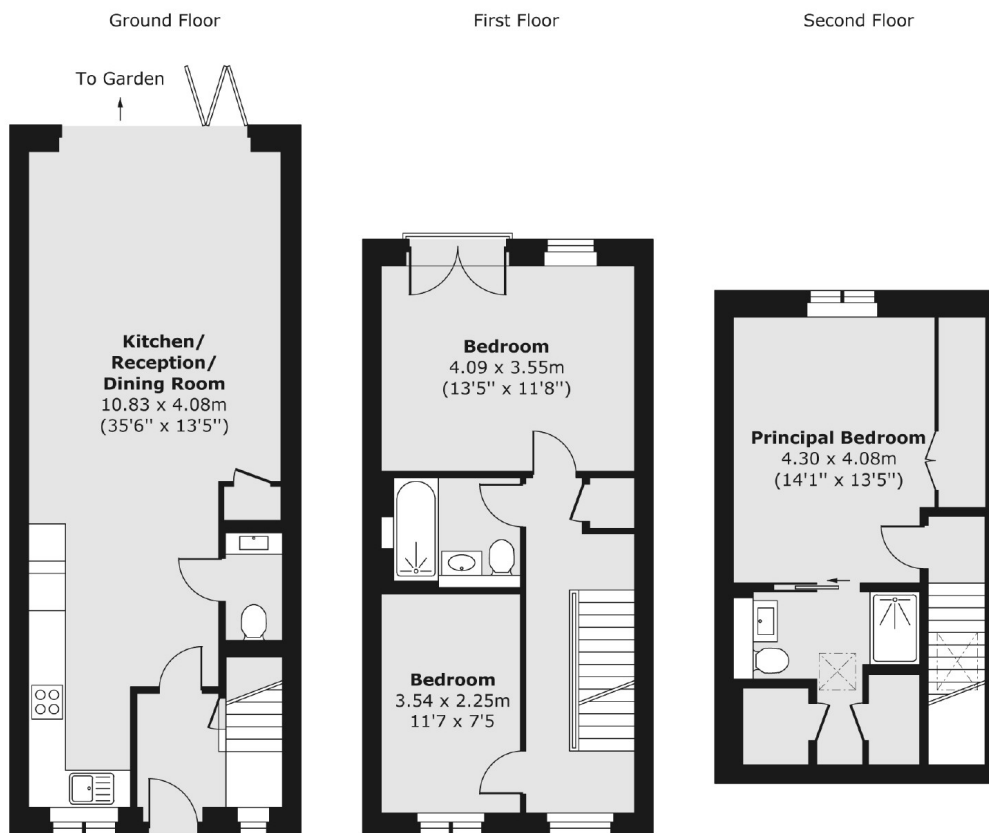
An intimate collection of just six family homes. Each home has three double bedrooms and two bathrooms. There is adequate off street parking and there are large private gardens.

Rural Way is a quiet cul-de-sac within reach of both Tooting and Streatham. It is near to both Streatham Common and Tooting Stations with the green open spaces of Streatham Common just nearby.

Features

- Three Double Bedroom
- Two Bathrooms
- Off Street Parking
- Private Gardens
- Air Source Heat Pump
- New Build - No Chain

Rural Way, Streatham, SW16



Total area (approx.) 110.45 sq. m (1,189 sq. ft)

Dexters

New Homes South London
12 The Broadway
London
SW19 1RF
Sales
020 8674 4555

Energy Rating: . We aim to make our particulars both accurate and reliable. However they are not guaranteed; nor do they form part of an offer or contract. If you require clarification on any points then please contact us, especially if you're traveling some distance to view. Please note that appliances and heating systems have not been tested and therefore no warranties can be given as to their good working order.

 **RICS** | Regulated
Estate Agent
and Letting Agent

[dexters.co.uk](https://www.dexters.co.uk)