



## Harbour Avenue, SW10

£3,350,000

A three bedroom, 1521 sq ft apartment in Chelsea Harbour. The kitchen has Gaggenau appliances with high quality German designed worktops and Calcutta cut marble.

The lounge gives access to the balcony with views towards the Thames and Chelsea's World Famous Design Centre. The apartment has a second wrap around terrace allowing outdoor access from the hallway, first and second bedrooms.

Lighterman Towers has multiple transport links. Being a few minutes walk to Imperial Wharf station with access to the Overground and one stop to West Brompton with

### Features

- Three Bedrooms
- Fitness Centre/Gym
- 24 hour Concierge
- Parking Available
- Roof Terrace
- Move In Ready

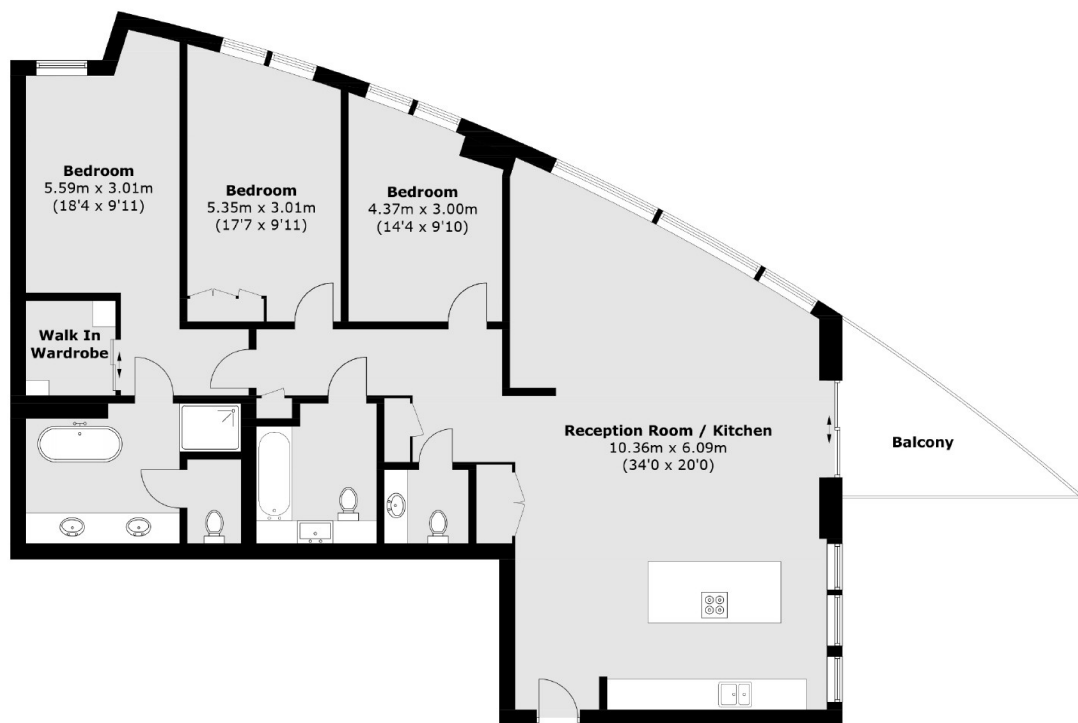




Harbour Avenue, SW10



# Harbour Avenue, London, SW10



Total area (approx.): 143.1 sq. m (1,540.3 sq. ft)  
Balcony area (approx.): 8.4 sq. m (90.4 sq. ft)

## Dexters

New Homes South London  
12 The Broadway  
London  
SW19 1RF  
Sales  
020 8674 4555

Energy Rating: . We aim to make our particulars both accurate and reliable. However they are not guaranteed; nor do they form part of an offer or contract. If you require clarification on any points then please contact us, especially if you're traveling some distance to view. Please note that appliances and heating systems have not been tested and therefore no warranties can be given as to their good working order.

 **RICS** | Regulated  
Estate Agent  
and Letting Agent

[dexters.co.uk](https://www.dexters.co.uk)