

## East Hill, SW18

### £775,000

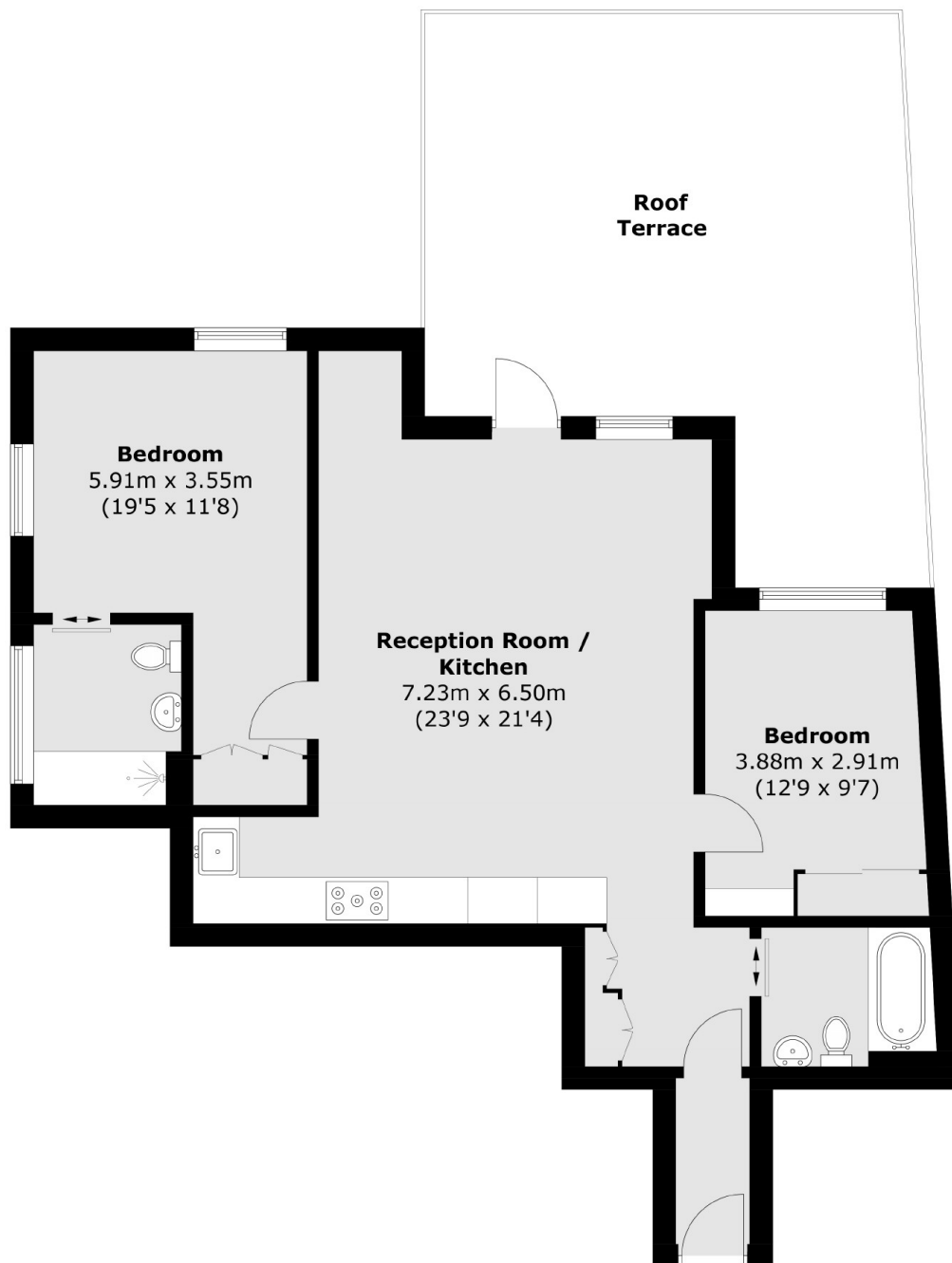
Located on the first floor, this two bedroom, two bathroom newly built apartments comes with a spacious kitchen living space, plenty of storage and a huge roof terrace. Complimented with Miele and Siemens appliances and integrated smart home controls for hot water and central heating.

The shops and amenities of St John's Road and Northcote Road as well as Clapham Junction station are all less than ½ mile away, whilst Wandsworth Common is just a few steps from the front door.

### Features

- Two Bedrooms
- Two Bathrooms
- Roof Terrace
- Miele and Siemens Appliances
- Secure Bicycle Storage
- Roof Top Garden
- Eco-Friendly Development

# East Hill, Wandsworth, SW18



Total area (approx.): 79.8 sq. m (859.0 sq. ft)  
Roof Terrace: 38.5 sq. m (414.4 sq. ft)