



Cavendish Grove, SW20

£1,095,000

The Allsop is a stunning 4-bedroom home spread across three storeys, featuring high-specification finishes and unique inclusions throughout, plus two well-equipped family bathrooms. Ready for an estimated occupation of Q4 2025.

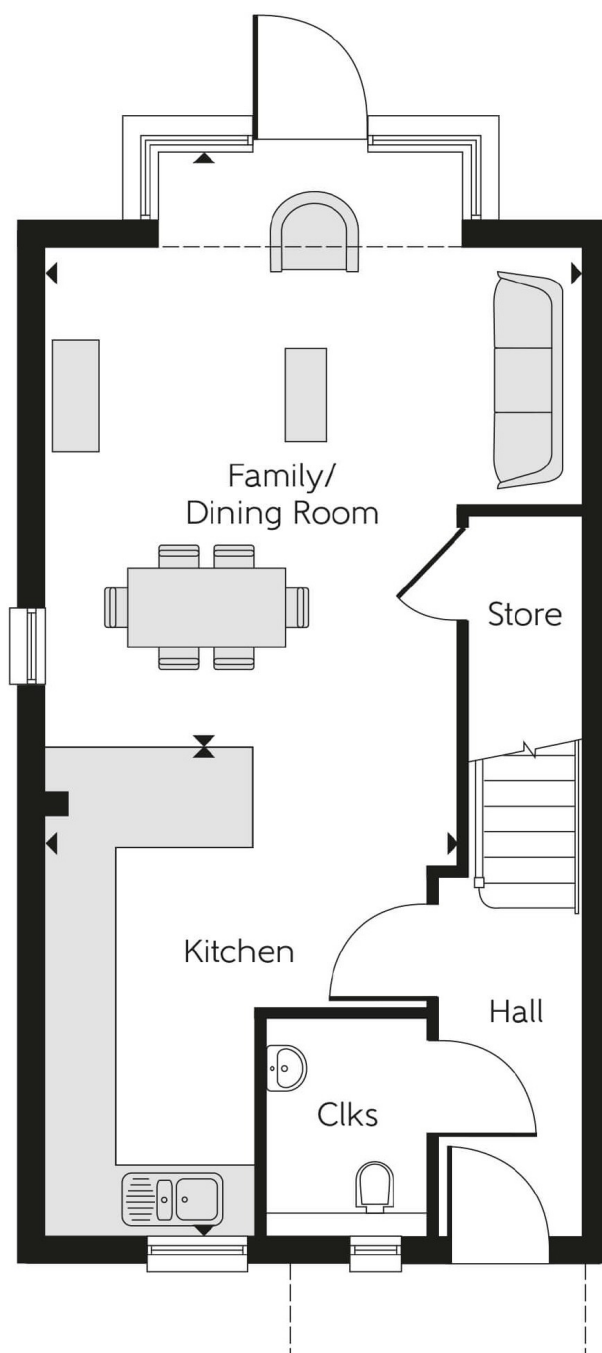
Completion expected Q4 2025

Cavendish Grove is a modern development of homes and apartments in Raynes Park, London. Offering a mix of 1- and 2-bedroom, plus 3- and 4-bedroom homes, this precisely planned community is sure to appeal to a range of potential homebuyers, including first-time buyers, families, young professionals, and London commuters.

Features

- Allocated Parking Space
- Electric Car Charging
- Four Bedrooms
- Two Bathrooms
- Walking To Raynes Park
- Residents Facilities

Cavendish Grove, Raynes Park, SW20



Dexters

Wimbledon
12 The Broadway
London
SW19 1RF
Sales
020 8545 8580

Energy Rating: . We aim to make our particulars both accurate and reliable. However they are not guaranteed; nor do they form part of an offer or contract. If you require clarification on any points then please contact us, especially if you're traveling some distance to view. Please note that appliances and heating systems have not been tested and therefore no warranties can be given as to their good working order.

 **RICS** | Regulated
Estate Agent
and Letting Agent

[dexters.co.uk](https://www.dexters.co.uk)