



Meadowview Road, SW20

£1,095,000

The Allsop is a 4-bedroom home that extends across three floors and features an open planned kitchen, living and dining area, a separate living room, three double bedrooms with an en suite shower room to the primary bedroom, and a stylish family bathroom.

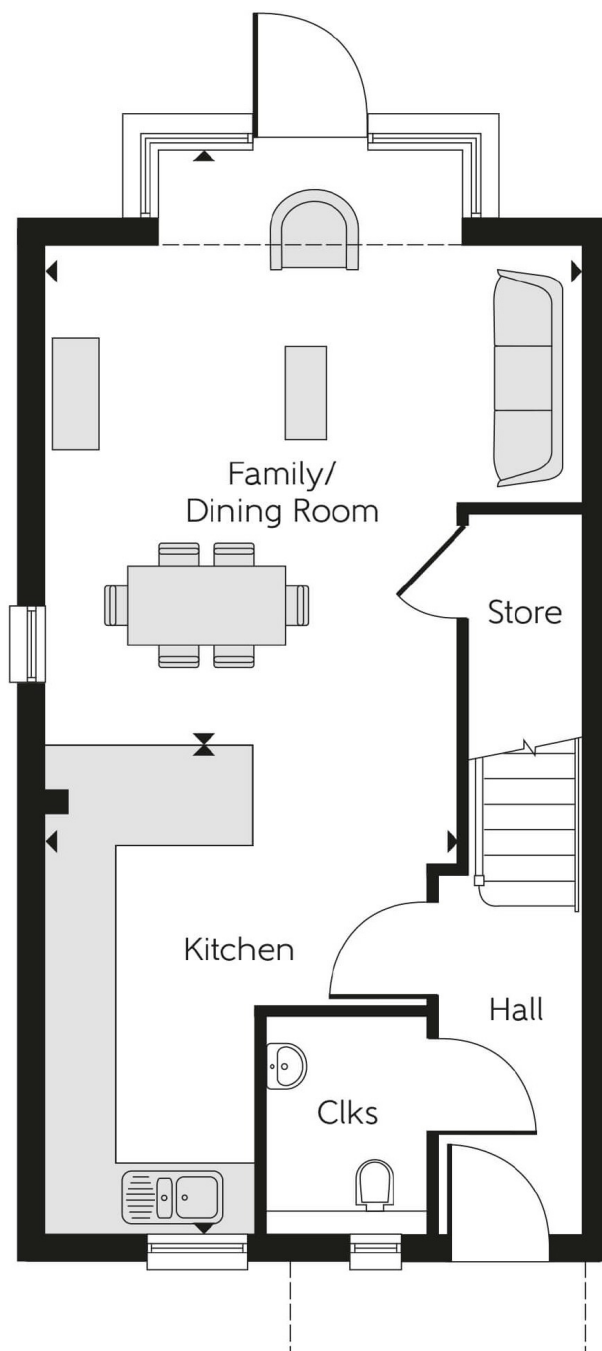
Completion expected Q4 2025

Cavendish Grove is a modern development of homes and apartments in Raynes Park, London. Offering a mix of 1- and 2-bedroom, plus 3- and 4-bedroom homes, this precisely planned community is sure to appeal to a range of potential homebuyers.

Features

- Communal Tennis Courts
- Four Bedrooms
- Two Bathrooms + W.C
- Integrated Appliances
- Quiet Cul-De-Sac Location
- Communal Football Pitches

Meadowview Road, Raynes Park, SW20



Dexters

New Homes South London
12 The Broadway
London
SW19 1RF
Sales
020 8674 4555

Energy Rating: . We aim to make our particulars both accurate and reliable. However they are not guaranteed; nor do they form part of an offer or contract. If you require clarification on any points then please contact us, especially if you're traveling some distance to view. Please note that appliances and heating systems have not been tested and therefore no warranties can be given as to their good working order.

 **RICS** | Regulated
Estate Agent
and Letting Agent

[dexters.co.uk](https://www.dexters.co.uk)