

Mitcham Road, SW17

£580,000

A two bedroom, two bathroom apartment with plenty of eaves storage. There are German appliances, a German gas boiler with emphasis on low running costs including a 999 year lease, share of the freehold and fair service charges.

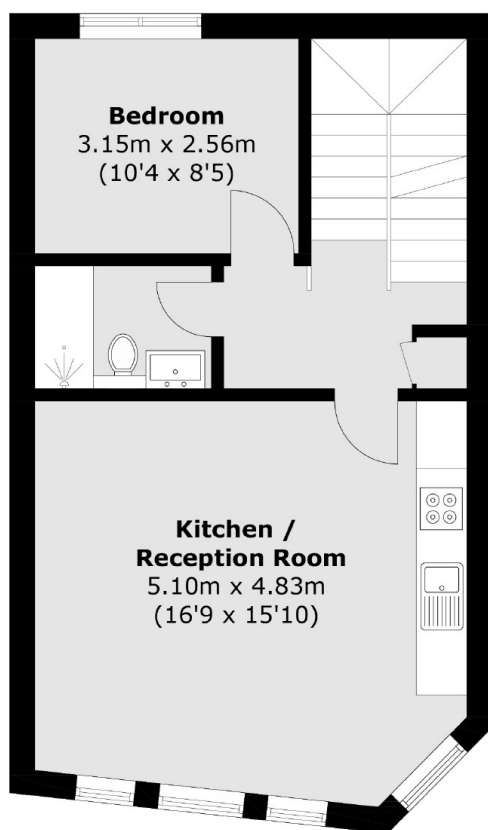
Please note photos used may be from the show home in the same development

Conveniently located for the bustling amenities of central Tooting with it's shops, bars and restaurants on the doorstep. The excellent transport links of both Tooting Broadway Underground and Tooting Railway stations are within walking distance.

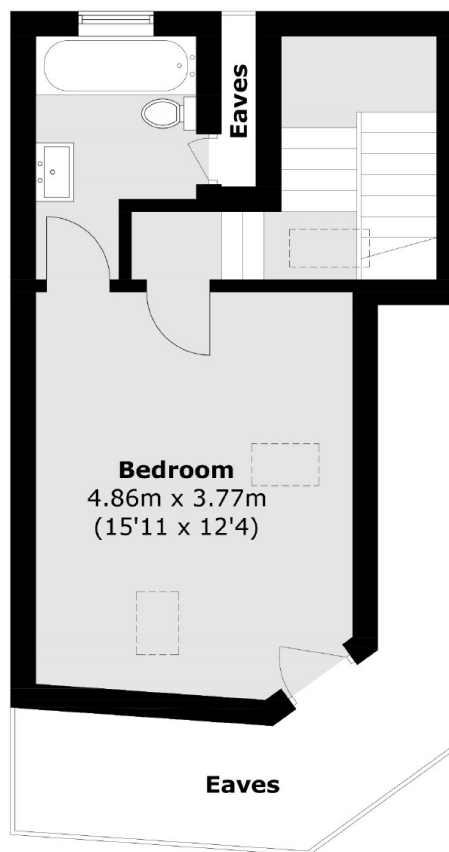
Features

- Two Bedrooms
- Two Bathrooms
- German Appliances
- German Gas Boilers
- Duplex Apartment
- 999 Year Lease
- Share Of The Freehold
- Eaves Storage

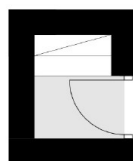
Mitcham Road, Tooting, SW17



First Floor



Second Floor



Ground Floor

Total area (approx.): 76.9 sq. m (827.7 sq. ft)
(Excluding Eaves)