

Mitcham Road, SW17

£440,000

A very unique Victorian conversion apartment. There is a well designed kitchen/reception space, a further reception room or study space and large bedroom with small patio area. With plenty of storage throughout, this apartment also has a 999 year lease and a share of the freehold.

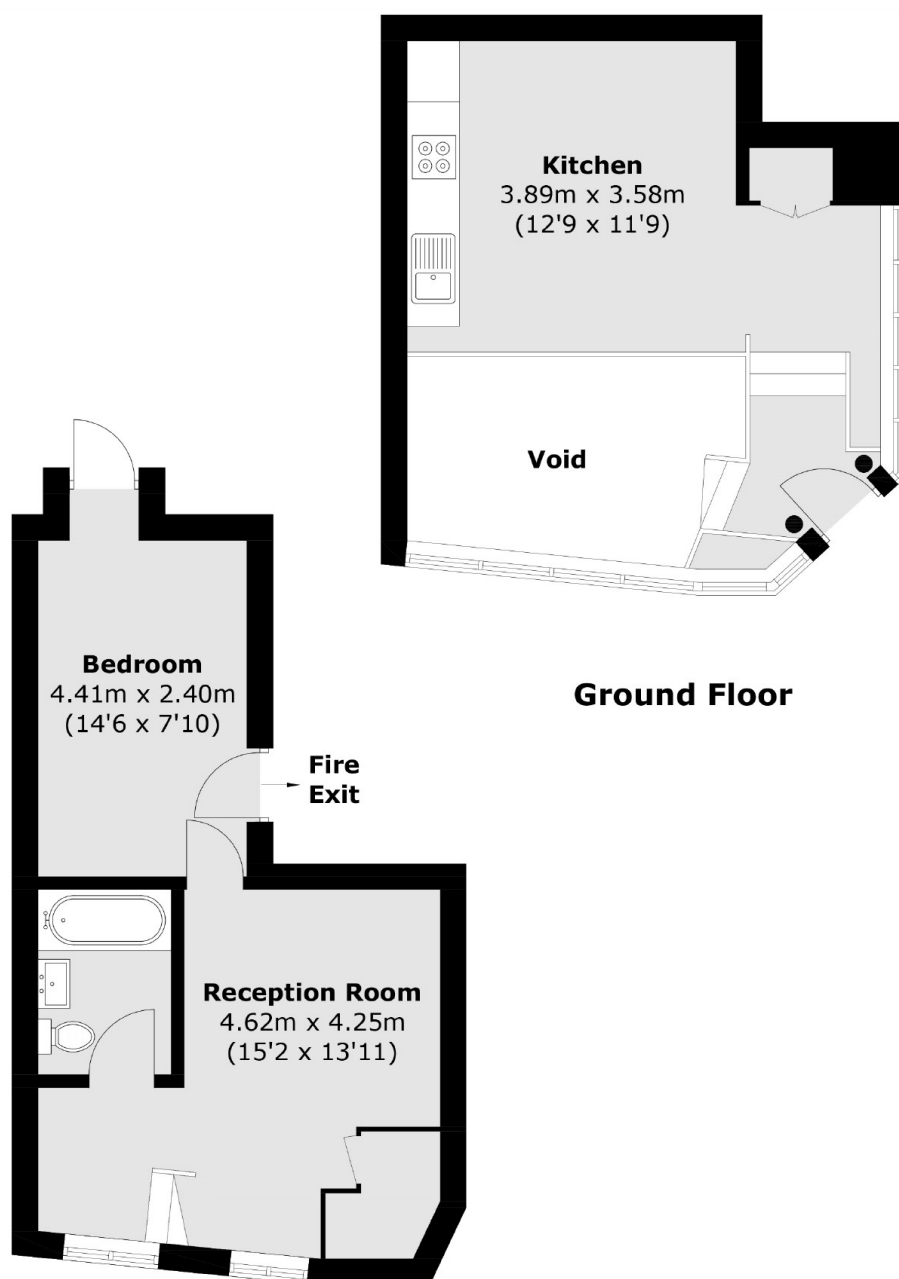
Please note photos used may be from the show home in the same development

Conveniently located for the bustling amenities of central Tooting with it's shops, bars and restaurants on the doorstep. The excellent transport links of both Tooting Broadway Underground and Tooting Railway stations are within walking distance.

Features

- Victorian Period Conversion
- Duplex Apartment - Maisonette
- High Specification Throughout
- German Appliances
- Quartz Worktops
- Bespoke Designed Bathrooms
- 999 Year Leases
- Share Of The Freehold

Mitcham Road, Tooting, SW17



Lower Ground Floor

Total area (approx.): 50.5 sq. m (543.6 sq. ft)
(Excluding Void)

Dexters

New Homes South London
12 The Broadway
London
SW19 1RF
Sales
020 8674 4555

Energy Rating: . We aim to make our particulars both accurate and reliable. However they are not guaranteed; nor do they form part of an offer or contract. If you require clarification on any points then please contact us, especially if you're traveling some distance to view. Please note that appliances and heating systems have not been tested and therefore no warranties can be given as to their good working order.

 **RICS** | Regulated
Estate Agent
and Letting Agent

[dexters.co.uk](https://www.dexters.co.uk)