



Mitcham Road, SW17

£560,000

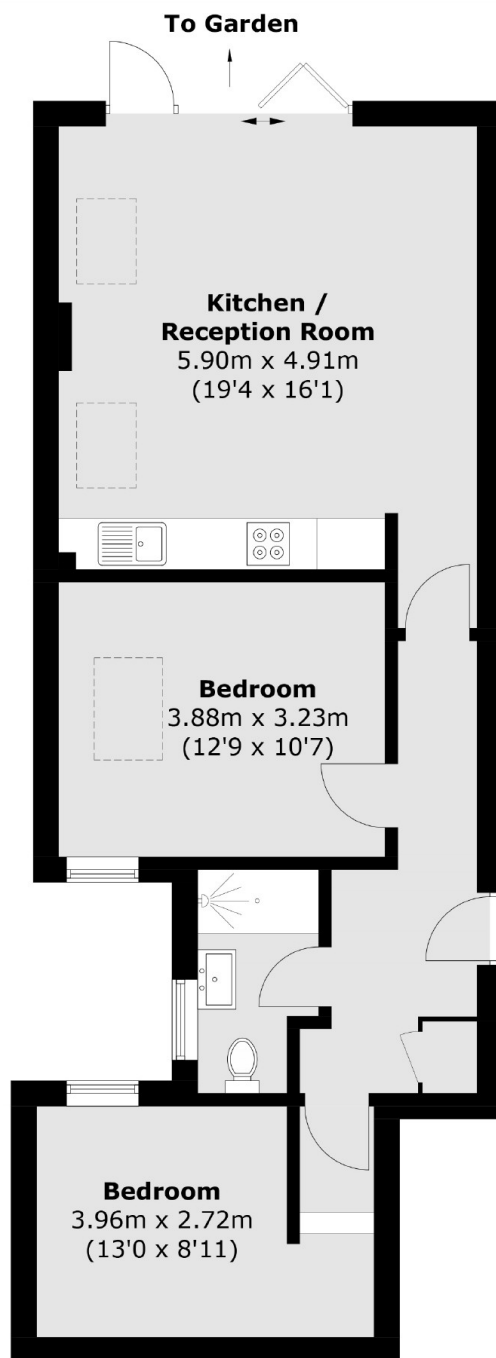
A ground floor, Victorian conversion apartment with two bedrooms and a private garden. Both bedrooms are of generous size. There is a 999 year lease, share of the freehold and no onward chain.

Conveniently located for the bustling amenities of central Tooting with it's shops, bars and restaurants on the doorstep. The excellent transport links of both Tooting Broadway Underground and Tooting Railway stations are within walking distance.

Features

- Two Double Bedrooms
- Private Garden
- Maisonette Apartment
- Victorian Refurbishment
- 999 Year Lease
- High Specification
- German Appliances
- 4-In-1 Boiling Hot Water Tap

Mitcham Road, Tooting, SW17



Ground Floor

Total area (approx.): 62.9 sq. m (677.0 sq. ft)

Dexters

New Homes South London
12 The Broadway
London
SW19 1RF
Sales
020 8674 4555

Energy Rating: . We aim to make our particulars both accurate and reliable. However they are not guaranteed; nor do they form part of an offer or contract. If you require clarification on any points then please contact us, especially if you're traveling some distance to view. Please note that appliances and heating systems have not been tested and therefore no warranties can be given as to their good working order.

 **RICS** | Regulated
Estate Agent
and Letting Agent

[dexters.co.uk](https://www.dexters.co.uk)