



Earlsfield Road, SW18

£900,000

Victorian rebuild conversion flat with large private garden, three bedrooms, two bathrooms and an allocated parking space. Finished to an incredible standard from top to bottom, with quartz worktops, wooden kitchens and bespoke bathrooms. 999 year lease.

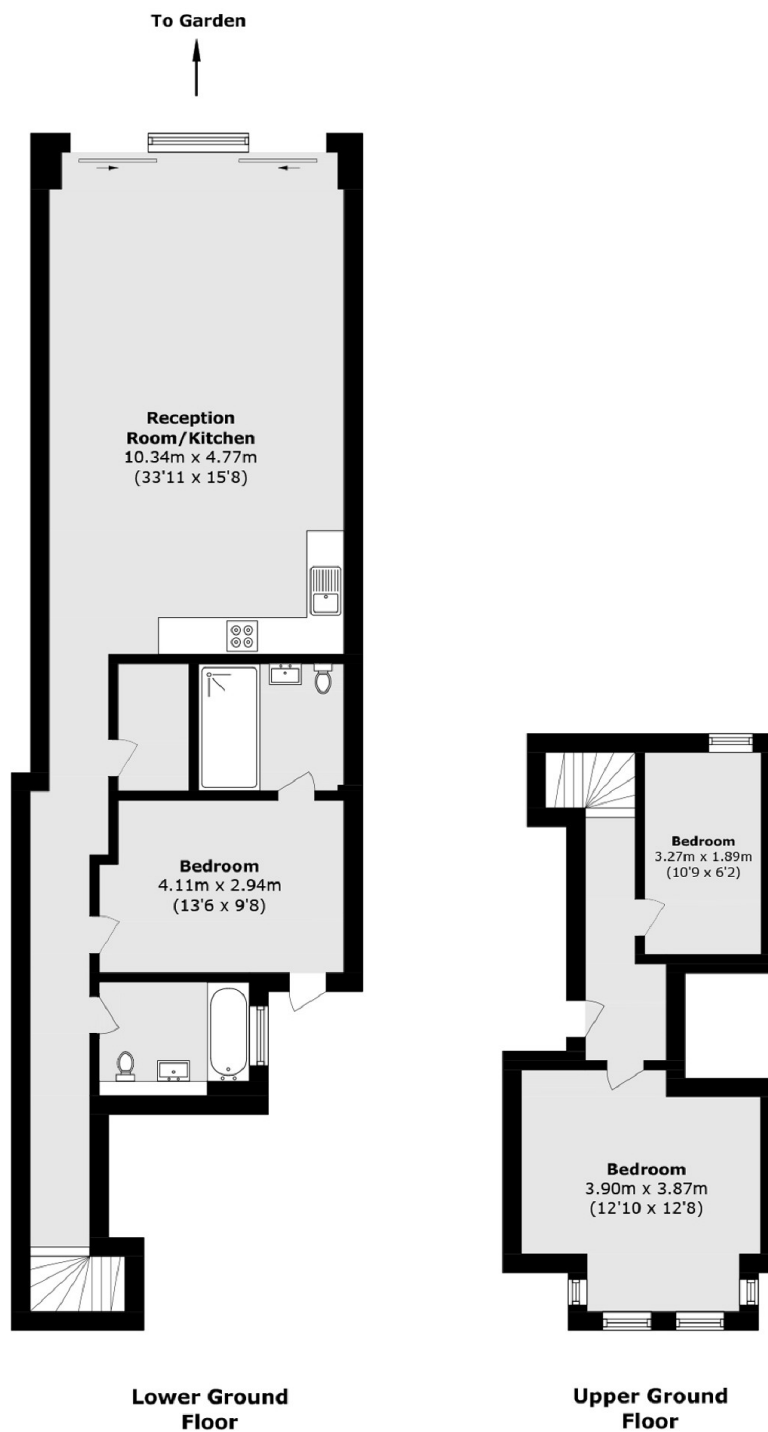
"Photography used from a previous development by the same developer also on the same road to display an indicative final finish"

Earlsfield is a charming and vibrant area located in the southwest London borough of Wandsworth. This residential neighbourhood exudes a unique blend of urban convenience and suburban tranquillity, making it a popular choice for families and young professionals alike.

Features

- Victorian Rebuild - 1885
- Three Bedrooms
- Two Bathrooms
- Open Plan Kitchen Lounge
- Split Level Apartment
- Allocated Parking Space
- South-East Facing Garden

Earlsfield Road, Earlsfield, SW18



Total area (approx.): 100.7 sq. m (1083.9 sq. ft)

Dexters

New Homes South London
12 The Broadway
London
SW19 1RF
Sales
020 8674 4555

Energy Rating: . We aim to make our particulars both accurate and reliable. However they are not guaranteed; nor do they form part of an offer or contract. If you require clarification on any points then please contact us, especially if you're traveling some distance to view. Please note that appliances and heating systems have not been tested and therefore no warranties can be given as to their good working order.

 **RICS** | Regulated
Estate Agent
and Letting Agent

[dexters.co.uk](https://www.dexters.co.uk)