



Earlsfield Road, SW18

£450,000

A top floor one bedroom apartment, forming part of a larger Victorian conversion with a large South-East facing roof terrace. There is a fantastic finish throughout, including shaker style kitchens, german appliances, oak flooring and marble worktops.

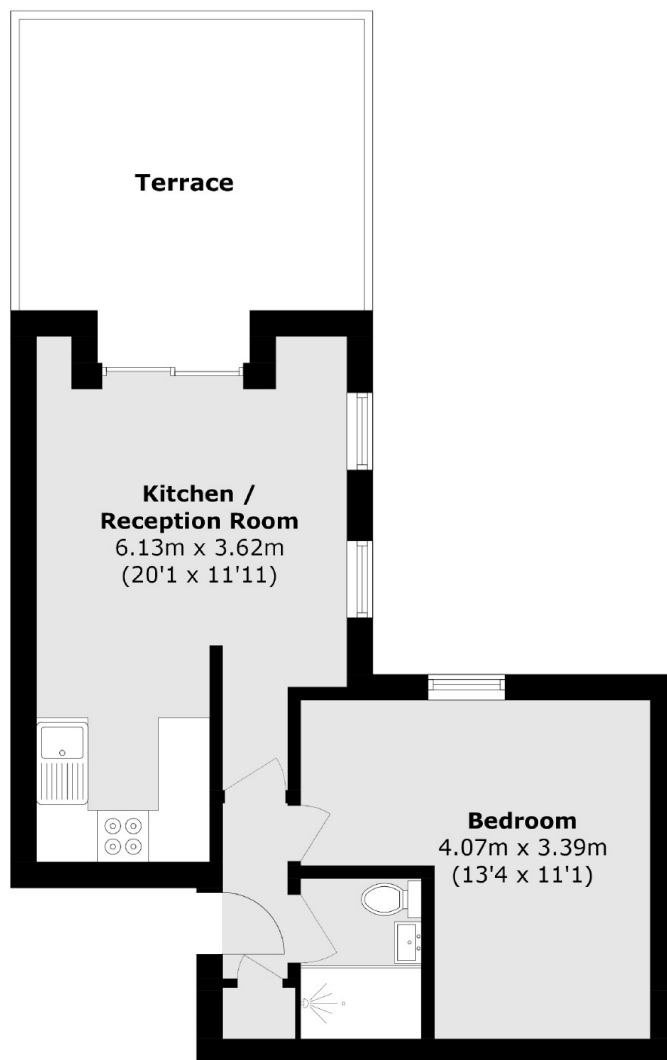
"Photography used from a previous development by the same developer also on the same road to display an indicative final finish"

Earlsfield is a charming and vibrant area located in the southwest London borough of Wandsworth. This residential neighbourhood exudes a unique blend of urban convenience and suburban tranquillity, making it a popular choice for families and young professionals alike.

Features

1885 - Victorian Villa
One Double Bedroom
Top Floor Apartment
Permit Parking Available
Open Plan Kitchen Lounge
South-East Facing Roof
Terrace
999 Year Lease

Earlsfield Road, Earlsfield, SW18



Top Floor

Total area (approx.): 34.9 sq. m (375.6 sq. ft)
(Excluding Terrace)

Dexters

New Homes South London
12 The Broadway
London
SW19 1RF
Sales
020 8674 4555

Energy Rating: . We aim to make our particulars both accurate and reliable. However they are not guaranteed; nor do they form part of an offer or contract. If you require clarification on any points then please contact us, especially if you're traveling some distance to view. Please note that appliances and heating systems have not been tested and therefore no warranties can be given as to their good working order.

 **RICS** | Regulated
Estate Agent
and Letting Agent

dexters.co.uk