

Earlsfield Road, SW18

£425,000

A top floor one double bedroom apartment with an incredible finish throughout including Bosch appliances, Quartz worktops and immaculate bathrooms. Situated within a Victorian Villa built in 1885 this apartment comes with no chain, and a 999 year lease.

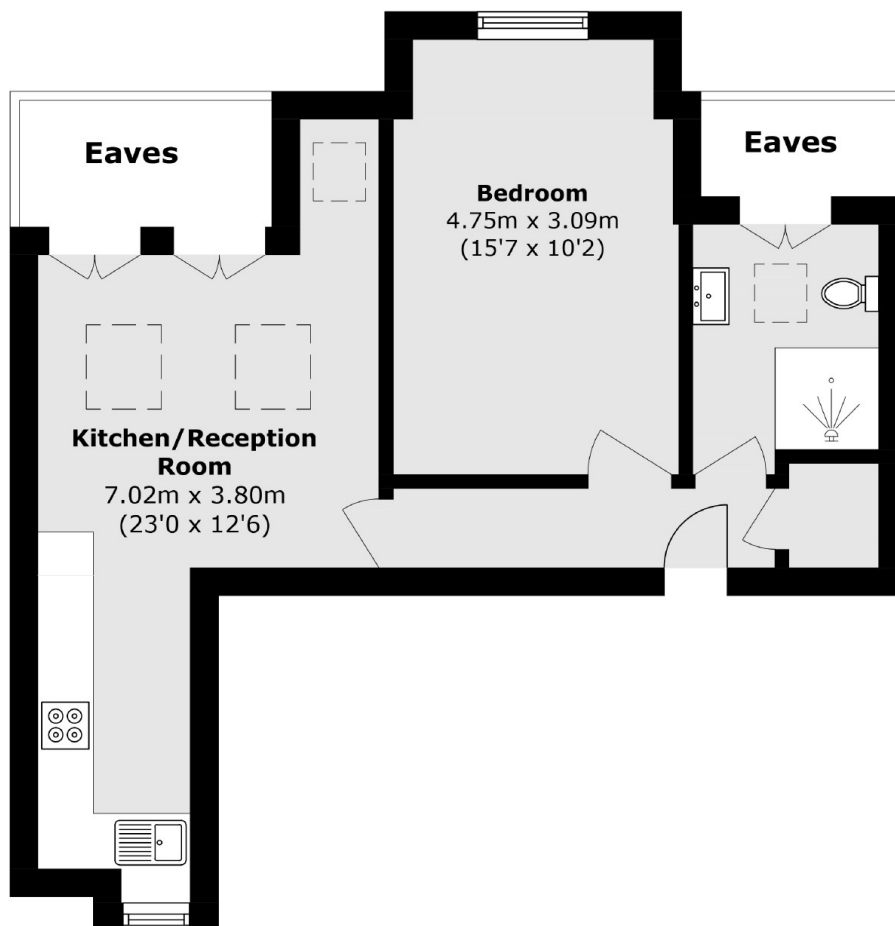
"Photography used from a previous development by the same developer also on the same road to display an indicative final finish"

Earlsfield is a charming and vibrant area located in the southwest London borough of Wandsworth. This residential neighbourhood exudes a unique blend of urban convenience and suburban tranquillity, making it a popular choice for families and young professionals alike.

Features

- One Bedroom
- 999 Year Lease
- Second Floor Apartment
- Permit Parking Available
- Open Plan Kitchen Lounge
- Victorian Rebuild - 1885

Earlsfield Road, Earlsfield, SW18



Total area (approx.): 45.4 sq. m (488.6 sq. ft)
(Excluding Eaves)

Dexters

New Homes South London
12 The Broadway
London
SW19 1RF
Sales
020 8674 4555

Energy Rating: . We aim to make our particulars both accurate and reliable. However they are not guaranteed; nor do they form part of an offer or contract. If you require clarification on any points then please contact us, especially if you're traveling some distance to view. Please note that appliances and heating systems have not been tested and therefore no warranties can be given as to their good working order.

 **RICS** | Regulated
Estate Agent
and Letting Agent

[dexters.co.uk](https://www.dexters.co.uk)