



## Earlsfield Road, SW18

### £395,000

A one double bedroom apartment, on the first floor, facing to the rear of the building with a Juliette balcony. Situated within an Victorian rebuild conversion this apartment has been refurbished from top to bottom. There is a 999 year lease too.

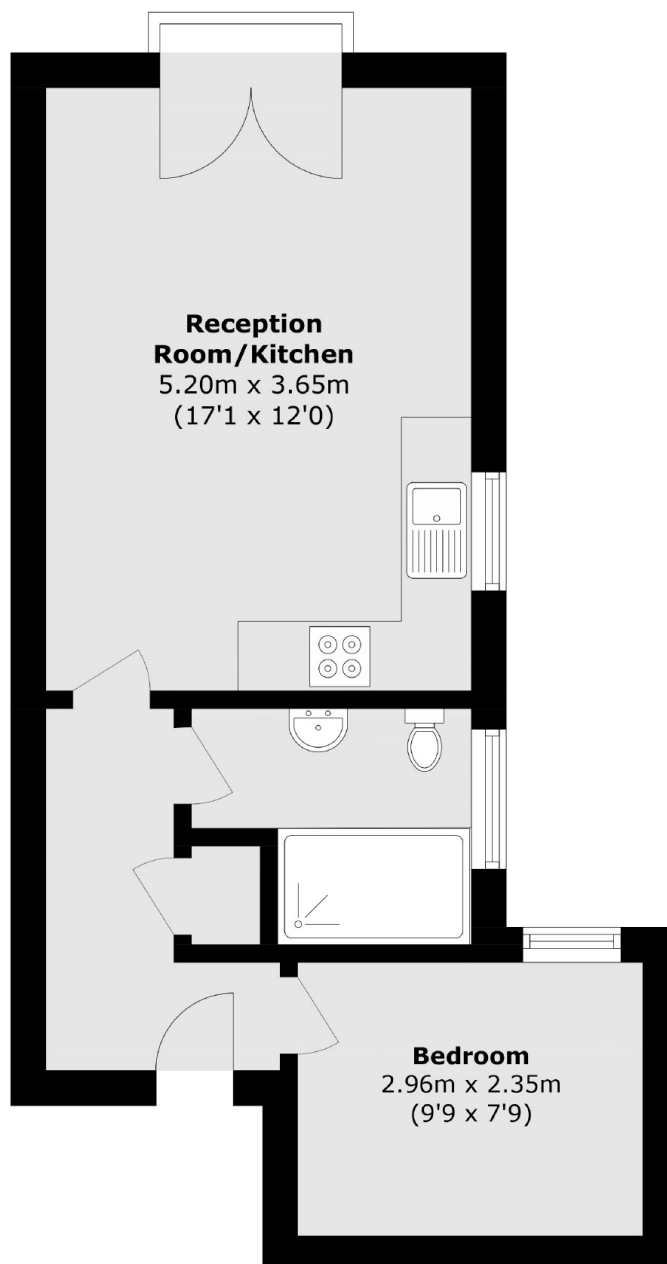
"Photography used from a previous development by the same developer also on the same road to display an indicative final finish"

Earlsfield is a charming and vibrant area located in the southwest London borough of Wandsworth. This residential neighbourhood exudes a unique blend of urban convenience and suburban tranquillity, making it a popular choice for families and young professionals alike.

### Features

- Victorian Rebuild - 1885
- One Double Bedroom
- First Floor Apartment
- Open Plan Kitchen Lounge
- Permit Parking Available
- Bike Storage
- Juliet Balcony
- 999 Year Lease

# Earlsfield Road, Earlsfield, SW18



Total area (approx.): 36.3 sq. m (390.7 sq. ft)

## Dexters

New Homes South London  
12 The Broadway  
London  
SW19 1RF  
Sales  
020 8674 4555

Energy Rating: . We aim to make our particulars both accurate and reliable. However they are not guaranteed; nor do they form part of an offer or contract. If you require clarification on any points then please contact us, especially if you're traveling some distance to view. Please note that appliances and heating systems have not been tested and therefore no warranties can be given as to their good working order.

 **RICS** | Regulated  
Estate Agent  
and Letting Agent

[dexters.co.uk](https://www.dexters.co.uk)