



## Kingsmead Road, SW2

£875,000

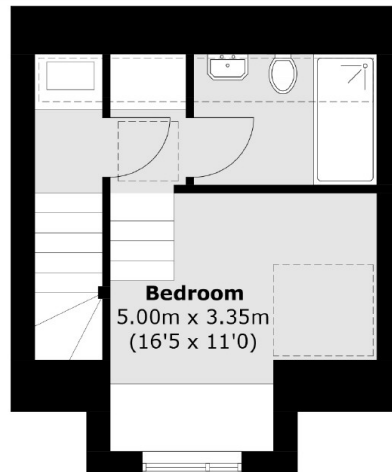
A freehold family home, featuring three bedrooms, two bathrooms with both private garden, and winter-garden/balcony. The specification throughout is incredible high including German appliances and bespoke designed bathrooms.

One of the most sought-after streets in the Streatham Hill/Tulse Hill area, perfectly positioned for both Streatham & Dulwich High streets and within easy reach of Tulse Hill station providing fast rail links to the city. The green open spaces of Brockwell Park are also nearby.

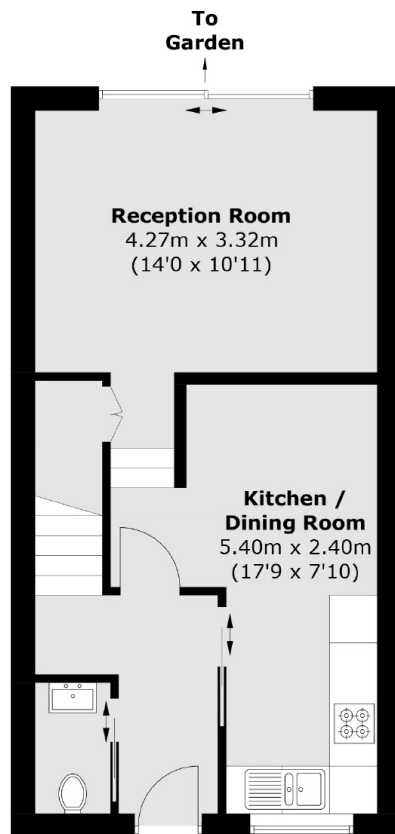
### Features

- Three Double Bedrooms
- Two Bathrooms
- Freehold House
- Winter Garden/Balcony
- Incredibly High Specification
- Bespoke Designed Homes
- Quiet & Popular Location

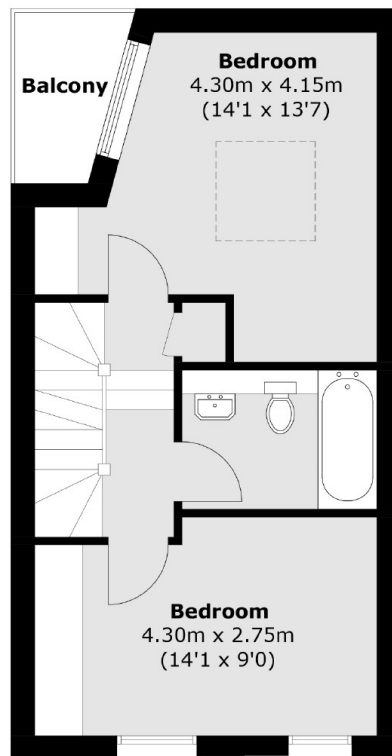
# Kingsmead Road, Brixton, SW2



**Second Floor**



**Ground Floor**



**First Floor**

Total area (approx.): 90.0 sq. m (968.6 sq. ft)  
Balcony (approx.): 2.6 sq. m (28.0 sq. ft)