



## Elm Grove, SW19

### £450,000

A one bedroom penthouse apartment with a south-facing terrace. The apartment offers 550 square foot of space with a 100 square foot south-facing roof terrace all within walking distance of Wimbledon. . Further benefits include low running costs and a share of the freehold.

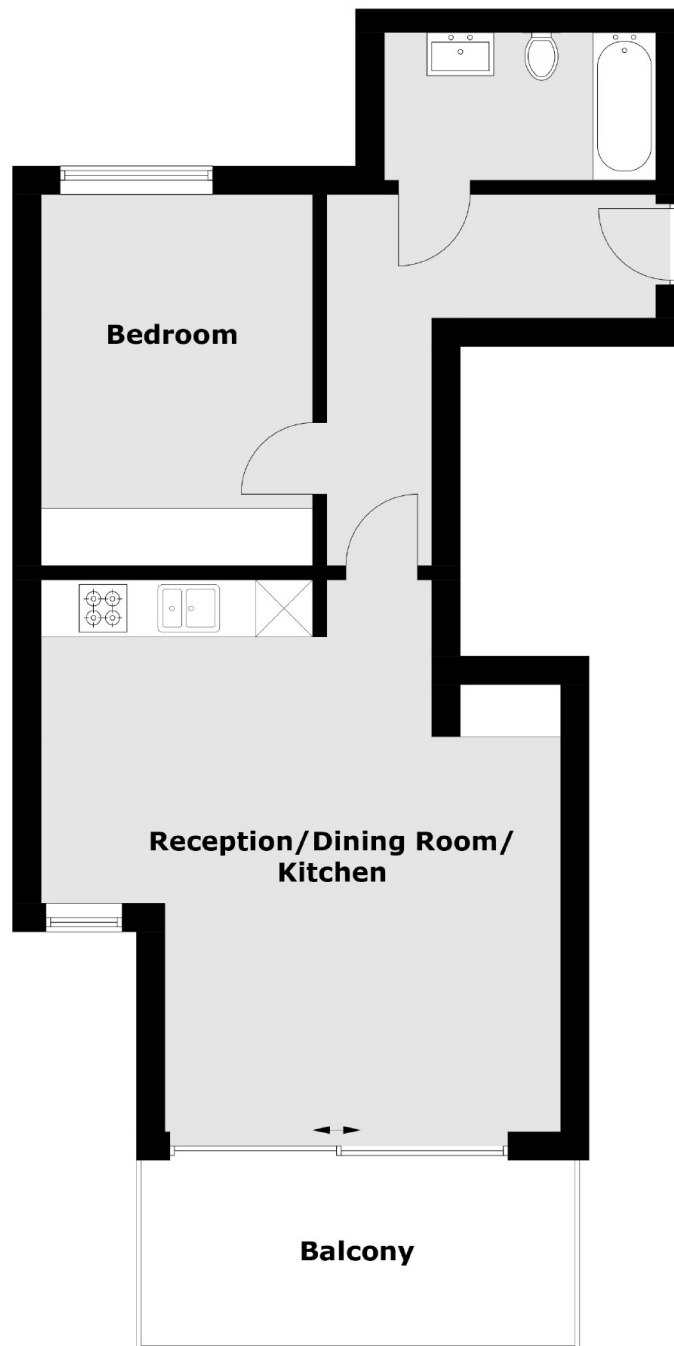
Please note - Show apartment photography from the same development have been used, alongside indicative floorplans produced from the planning documents to best represent the development.

Elm Grove is a cul-de-sac situated just off of Worple Road and just under half a mile walk from Wimbledon Broadway allowing easy access to the town centre's restaurants and shops. Transport links include overground, underground and a number of good bus routes.

### Features

- Penthouse Apartment
- One Bedrooms
- Eco-Conscious Build
- Large South Facing Terrace
- Wimbledon - Walking Distance
- Bike & Parcel Store
- Share Of The Freehold
- 999 Years Lease

Elm Grove,  
Wimbledon, SW19



**Flat 19**  
**Third Floor**

Total area (approx.): 51.03 sq. m (549.3 sq. ft)  
Balcony: 9.65 sq. m (103.9 sq. ft)

**Dexters**

New Homes South London  
12 The Broadway  
London  
SW19 1RF  
Sales  
020 8674 4555

Energy Rating: . We aim to make our particulars both accurate and reliable. However they are not guaranteed; nor do they form part of an offer or contract. If you require clarification on any points then please contact us, especially if you're traveling some distance to view. Please note that appliances and heating systems have not been tested and therefore no warranties can be given as to their good working order.

 **RICS** | Regulated  
Estate Agent  
and Letting Agent

[dexters.co.uk](http://dexters.co.uk)