



Cavendish Grove, SW20

£815,000

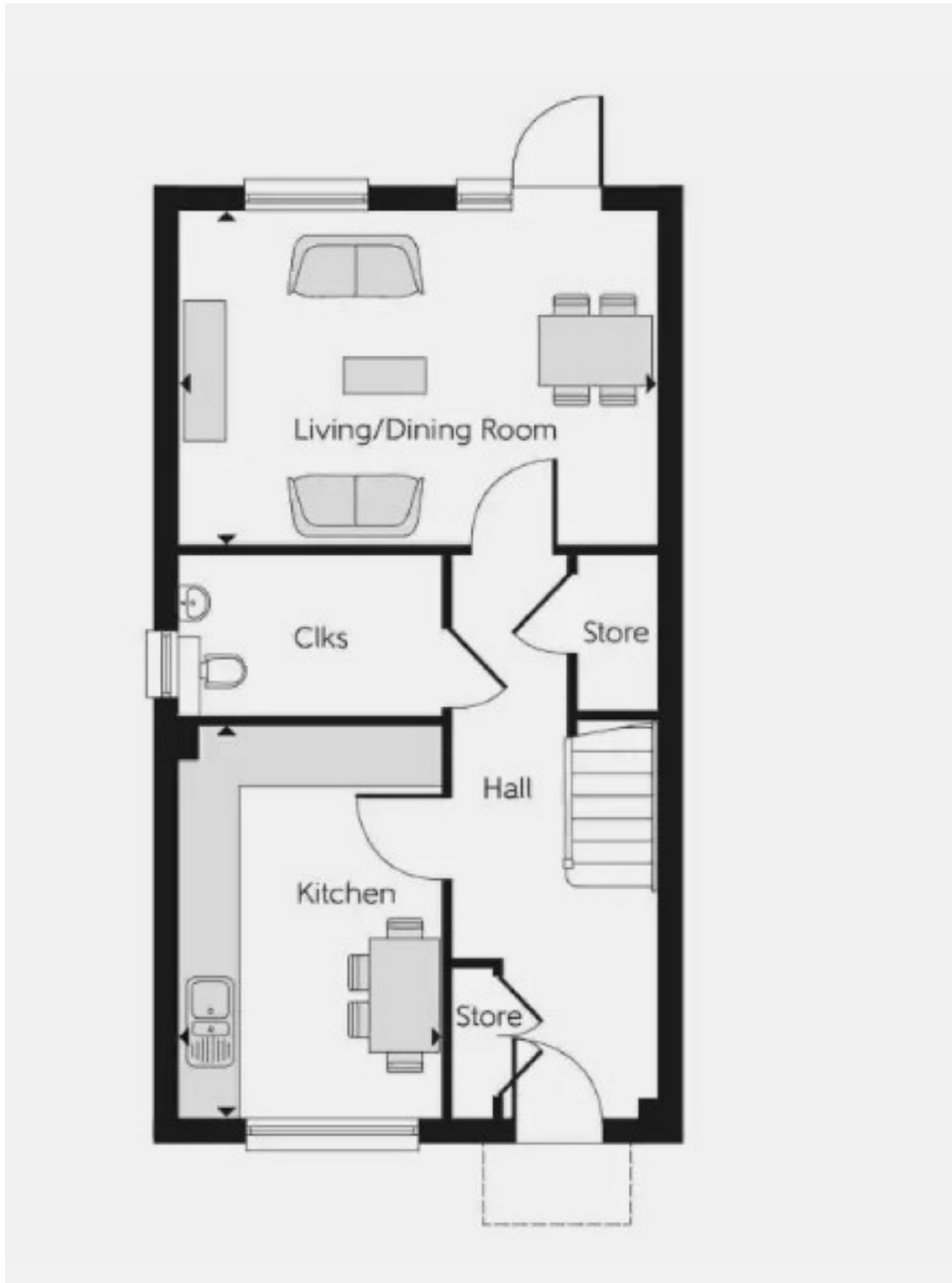
'The Charles' Show House - Launching 1st March - Please call 020 8674 4555 to arrange a viewing. The Taylor is a 3-bedroom home with an open-plan living and dining area, a separate front-facing kitchen, two double bedrooms plus a single bedroom, and an en suite to the master bedroom.

Cavendish Grove is a modern development of homes and apartments in Raynes Park, London. Offering a mix of 1- and 2-bedroom, plus 3- and 4-bedroom homes, this precisely planned community is sure to appeal to a range of potential homebuyers, including first-time buyers, families, young professionals, and London commuters.

Features

- Three Bedrooms
- Two Bathrooms
- Freehold Home
- Near To Raynes Park
- Easy Access For A3
- David Lloyd Walking Distance

Cavendish Grove, Raynes Park, SW20



Dexters

New Homes South London
12 The Broadway
London
SW19 1RF
Sales
020 8674 4555

Energy Rating: . We aim to make our particulars both accurate and reliable. However they are not guaranteed; nor do they form part of an offer or contract. If you require clarification on any points then please contact us, especially if you're traveling some distance to view. Please note that appliances and heating systems have not been tested and therefore no warranties can be given as to their good working order.

 **RICS** | Regulated
Estate Agent
and Letting Agent

[dexters.co.uk](https://www.dexters.co.uk)