



## East Hill, SW18

### £750,000

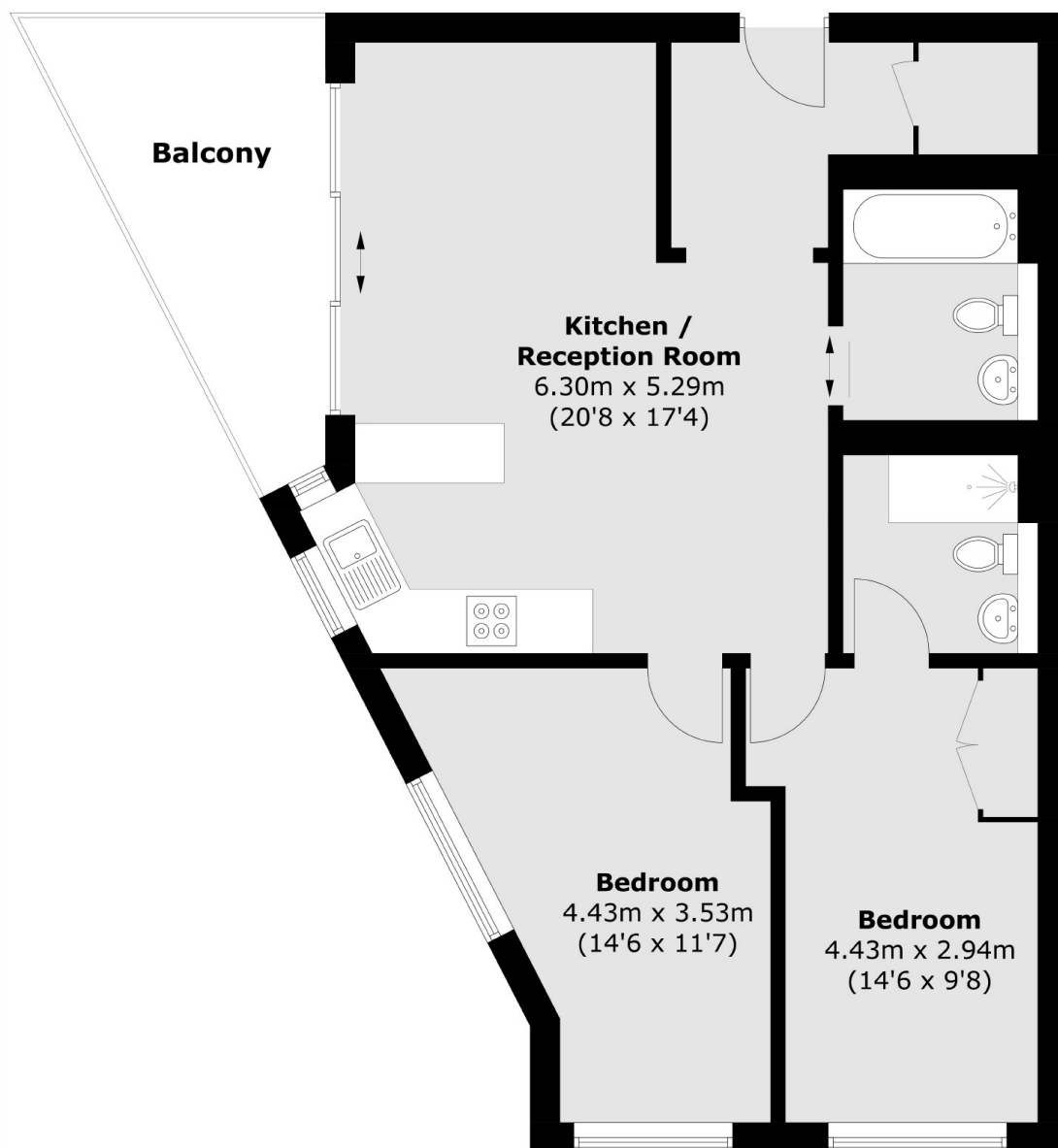
Located on the second floor, this apartment comes with a spacious kitchen living space, two large bedrooms, two bathrooms, plenty of storage, and a private balcony. The property comes with a balcony spacious enough for outdoor furniture. Complimented with Siemens appliances and integrated smart home controls for hot water and central heating.

The shops and amenities of St John's Road and Northcote Road as well as Clapham Junction station are all less than ½ mile away, whilst Wandsworth Common is just a few steps from the front door.

### Features

- Two Bedrooms
- Two Bathrooms
- Private Balcony
- Secure Bicycle Storage
- Communal Roof Top Garden
- Eco-Friendly Development

# East Hill, Wandsworth, SW18



Total area (approx.): 69.5 sq. m (748.0 sq. ft)  
Balcony : 9.6 sq. m (103 sq. ft)

## Dexters

New Homes South London  
12 The Broadway  
London  
SW19 1RF  
Sales  
020 8674 4555

Energy Rating: . We aim to make our particulars both accurate and reliable. However they are not guaranteed; nor do they form part of an offer or contract. If you require clarification on any points then please contact us, especially if you're traveling some distance to view. Please note that appliances and heating systems have not been tested and therefore no warranties can be given as to their good working order.

 **RICS** | Regulated  
Estate Agent  
and Letting Agent

dexters.co.uk