

East Hill, SW18

£730,000

A second floor, two bedroom two bathroom apartments and a large balcony. There is also a communal roof terrace accessible for all residents. The energy efficient design will also lead to low running costs for the new owner.

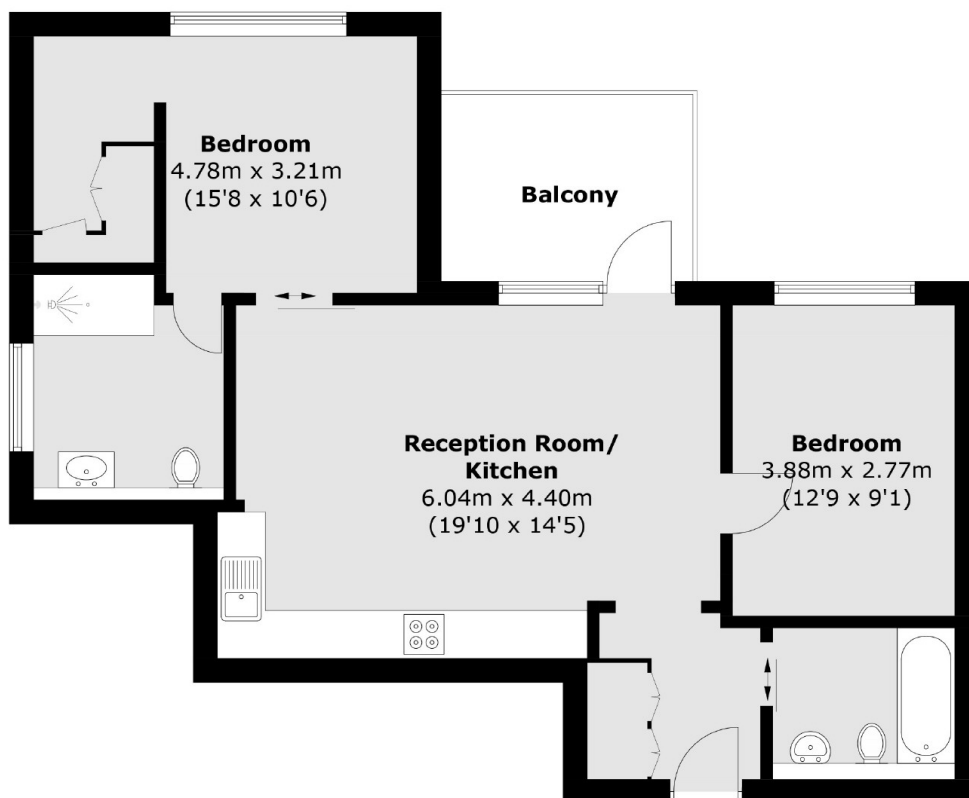
The shops and amenities of St John's Road and Northcote Road as well as Clapham Junction station are all less than ½ mile away, whilst Wandsworth Common is just a few steps from the front door.

Features

Two Bedrooms
En-Suite Dressing Area

Private Balcony
Secure Bicycle Storage
Communal Roof Top Garden
Eco-Friendly Development
Lift To All Floors

East Hill, Wandsworth, SW18



Total area (approx.): 69.3 sq. m (745.9 sq. ft)
Balcony: 7.3 sq. m (78.6 sq. ft)

Dexters

New Homes South London
12 The Broadway
London
SW19 1RF
Sales
020 8674 4555

Energy Rating: . We aim to make our particulars both accurate and reliable. However they are not guaranteed; nor do they form part of an offer or contract. If you require clarification on any points then please contact us, especially if you're traveling some distance to view. Please note that appliances and heating systems have not been tested and therefore no warranties can be given as to their good working order.

 **RICS** | Regulated
Estate Agent
and Letting Agent

[dexters.co.uk](https://www.dexters.co.uk)