



Elm Grove, SW19

£575,000

A first floor apartment with two bedrooms located within the centre of Wimbledon. There is a high specification throughout, including German & Italian appliances in the kitchen.

A collection of nineteen new build apartments including studio, one and two bedroom apartments all with their own private outside spaces, a share of the freehold and a communal bike and parcel store.

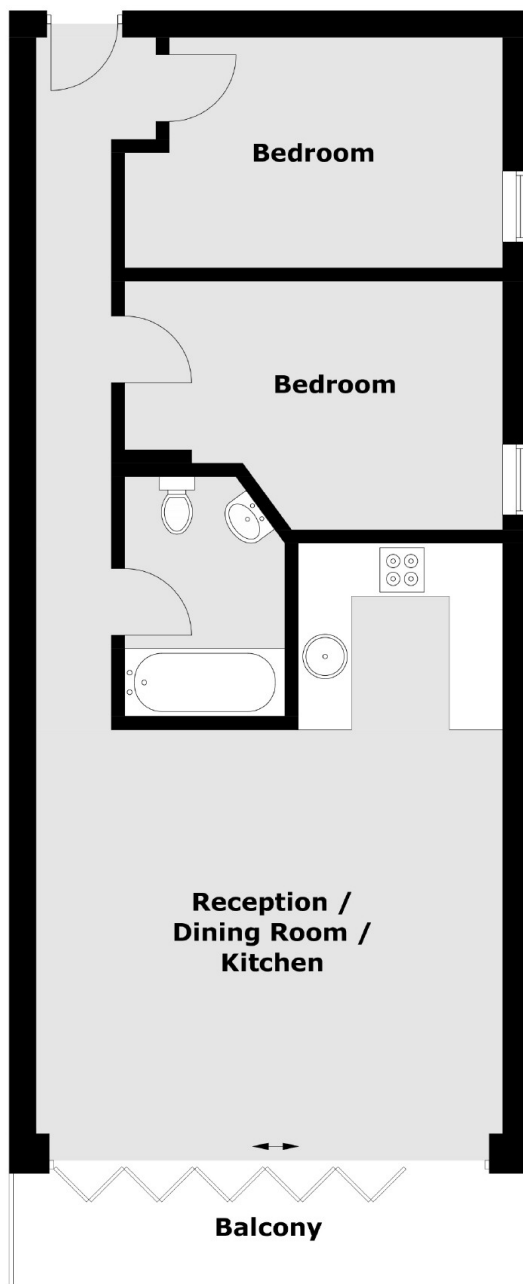
Please note - Whilst every effort has been made to accurately portray the development, CGI images have been used, alongside indicative floorplans produced from the planning documents.

Elm Grove is a cul-de-sac situated just off of Worple Road and just under half a mile walk from Wimbledon Broadway allowing easy access to the town centre's restaurants and shops. Transport links include overground, underground and a number of good bus routes.

Features

- Two Bedrooms
- One Bathroom
- Eco-Conscious Build
- Terrace/Patio Garden
- Wimbledon - Walking Distance
- Bike & Parcel Store
- Share Of The Freehold

Elm Grove, Wimbledon, SW19



Flat 8 First Floor

Total area (approx.): 61.78 sq. m (664.9 sq. ft)
Balcony: 8.06 sq. m (86.7 sq. ft)