



Yelverton Road, SW11

£710,000

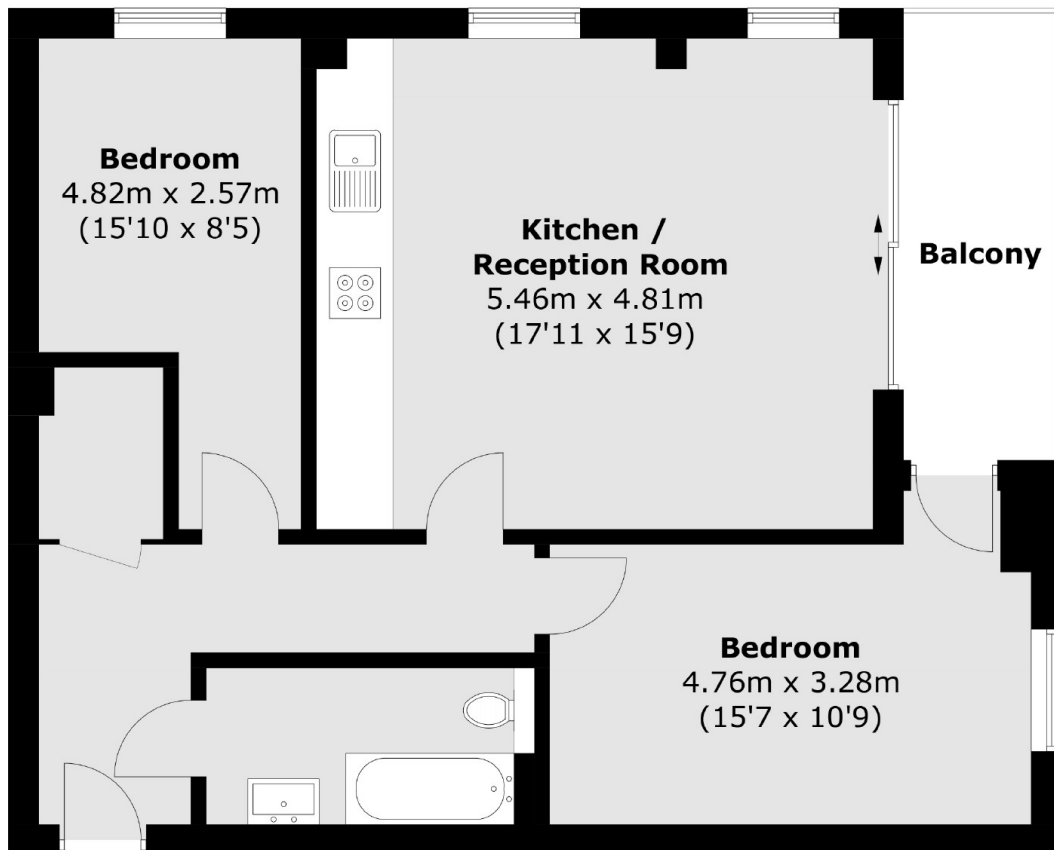
A large lateral apartment with far reaching views located on the fifteenth floor. There is a useful storage room, mechanical ventilation system and underfloor heating. There is a communal podium garden as well as a concierge and bike store within the development.

Yelverton Road Is conveniently located for access to Clapham Junction Station as well as the nightlife of both Clapham and Battersea. Near to both Battersea Power Station & Chelsea you are never far from food, drinks and entertainment.

Features

- Secure Allocated Parking
- Underfloor Heating
- Two Double Bedrooms
- Mechanical Ventilation System
- Concierge In Building
- Communal Podium Garden
- Far Reaching Views
- Large Balcony

Yelverton Road,
Battersea, SW11



Total area (approx.): 68.9 sq. m (741.6 sq. ft)
Balcony area (approx.): 6.6 sq. m (71.0 sq. ft)