



Elm Grove, SW19

£395,000

Dexters



Elm Grove, SW19

**** First Chance To View - Saturday 19th October ****

A one bedroom second floor apartment with a balcony overlooking Sacred Heart Church. The property has been built with an extremely highly energy efficient design, meaning the property will stay cool during summer and warm during winter allowing also for very low running costs.

A collection of nineteen new build apartments including studio, one and two bedroom apartments all with their own private outside spaces, a share of the freehold and a communal bike and parcel store.

Please note - Whilst every effort has been made to accurately portray the development, CGI images have been used, alongside indicative floorplans produced from the planning documents.

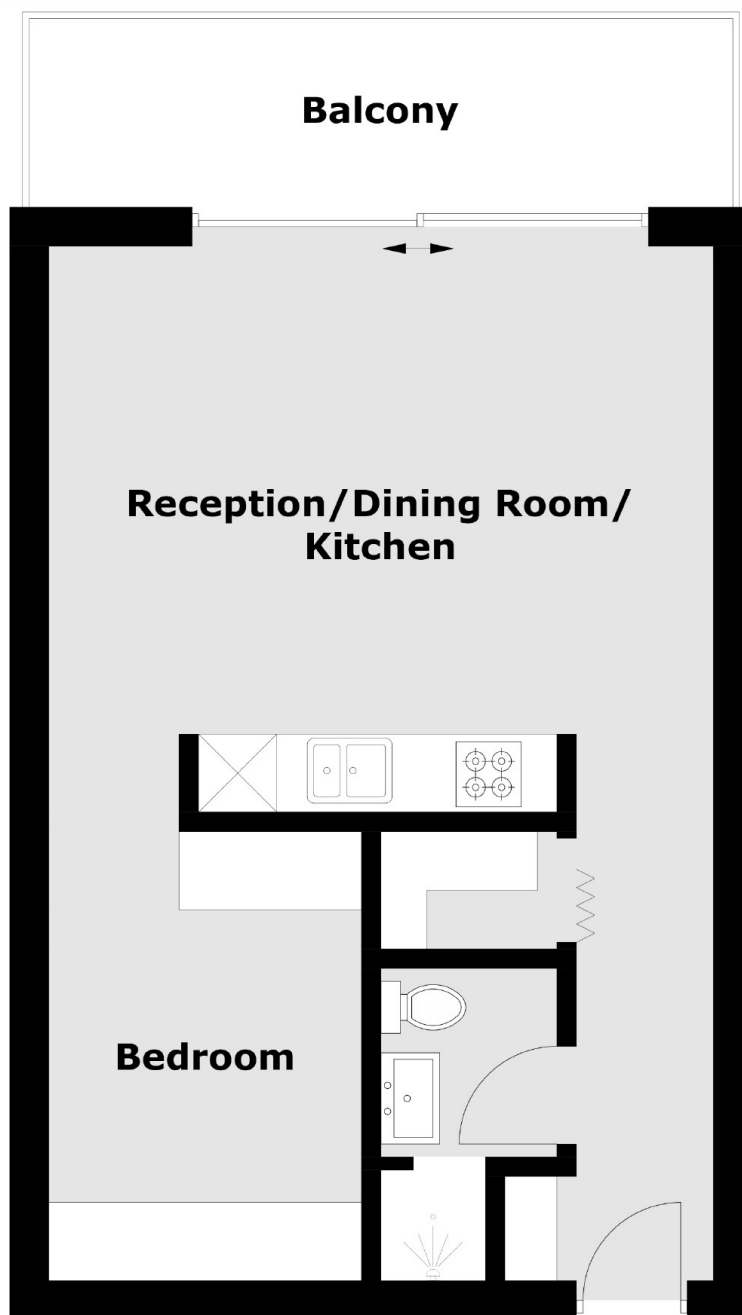
Elm Grove is a cul-de-sac situated just off of Worple Road and just under half a mile walk from Wimbledon Broadway allowing easy access to the town centre's restaurants and shops. Transport links include overground, underground and a number of good bus routes.

Features

- One Bedroom Studio
- Share Of The Freehold
- Large Balcony
- Low Running Costs
- German & Italian Appliances
- Close To Wimbledon



Elm Grove, Wimbledon, SW19



Flat 12 Second Floor

Total area (approx.): 40.33 sq. m (434.1 sq. ft)
Balcony: 7.59 sq. m (81.7 sq. ft)

Dexters

New Homes South London
12 The Broadway
London
SW19 1RF
Sales
020 8674 4555

Energy Rating: . We aim to make our particulars both accurate and reliable. However they are not guaranteed; nor do they form part of an offer or contract. If you require clarification on any points then please contact us, especially if you're traveling some distance to view. Please note that appliances and heating systems have not been tested and therefore no warranties can be given as to their good working order.

 **RICS** | Regulated
Estate Agent
and Letting Agent

dexters.co.uk