



## Elm Grove, SW19

£375,000

\*\* First Chance To View - Saturday 19th October \*\*

A ground floor 'Manhattan style' studio apartment with separate sleeping area and it's own private outside space. Incorporated into the build is a truly energy efficient design, including high thermal and acoustic insulation meaning there will be very low running costs and that the property stays warm in the winter, and cool in the summer.

A collection of nineteen new build apartments including studio, one and two bedroom apartments all with their own private outside spaces, a share of the freehold and a communal bike and parcel store.

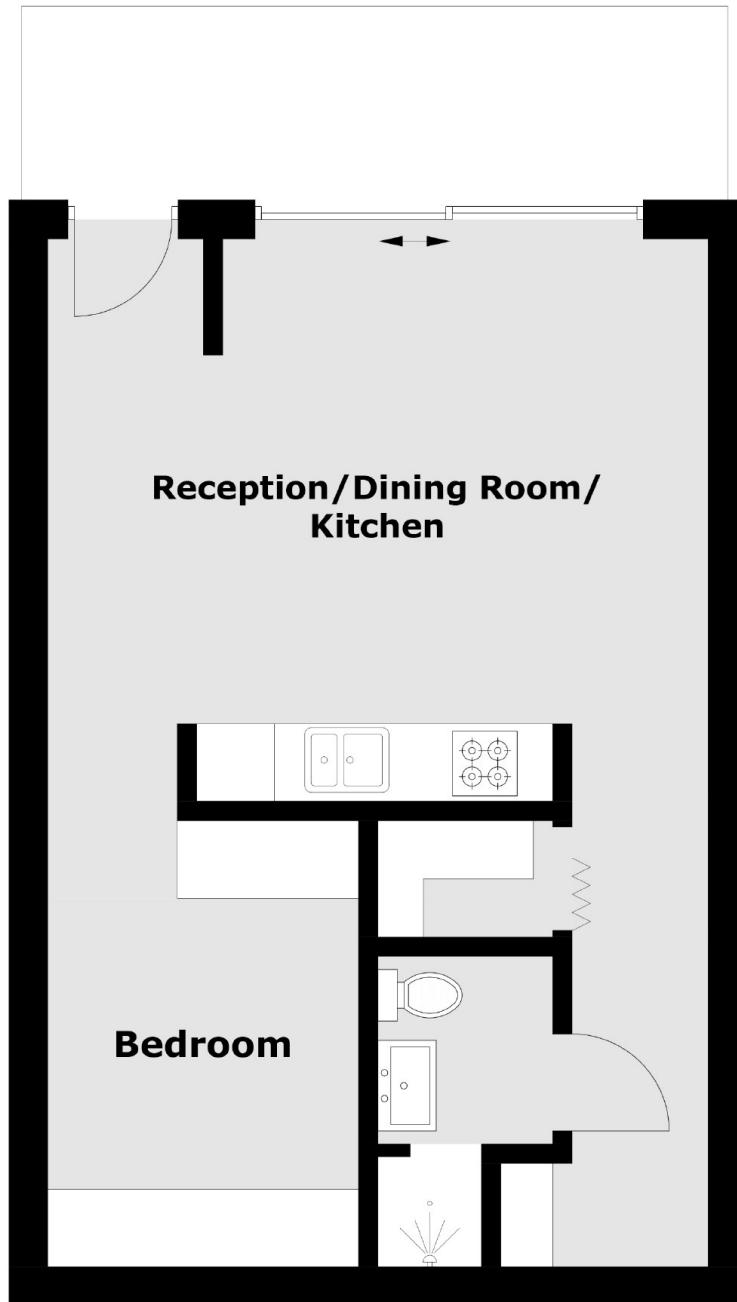
Please note - Whilst every effort has been made to accurately portray the development, CGI images have been used, alongside indicative floorplans produced from the planning documents.

Elm Grove is a cul-de-sac situated just off of Worple Road and just under half a mile walk from Wimbledon Broadway allowing easy access to the town centre's restaurants and shops. Transport links include overground, underground and a number of good bus routes.

### Features

- One Bedroom Studio
- Separate Sleeping Area
- Share Of The Freehold
- Private Outside Space
- Own Front Door
- Extremely Energy Efficient Build

# Elm Grove, Wimbledon, SW19



## Flat 2 Ground Floor

Total area (approx.): 40.33 sq. m (434.1 sq. ft)