



**Fernlea Road, SW12**

**£1,100,000**

**Dexters**



## Fernlea Road, SW12

A stunning Edwardian period conversion. Set on the ground floor, this newly refurbished three-bedroom, ground-floor flat is located just moments away from Central Balham and the green spaces of Tooting Bec Common, with a share of the freehold.

There is also a very useful utility room on the lower ground floor. It is worth noting that the property is also still eligible for an on-street parking permit. Please note - Some photography from other apartments within the same development have been used.

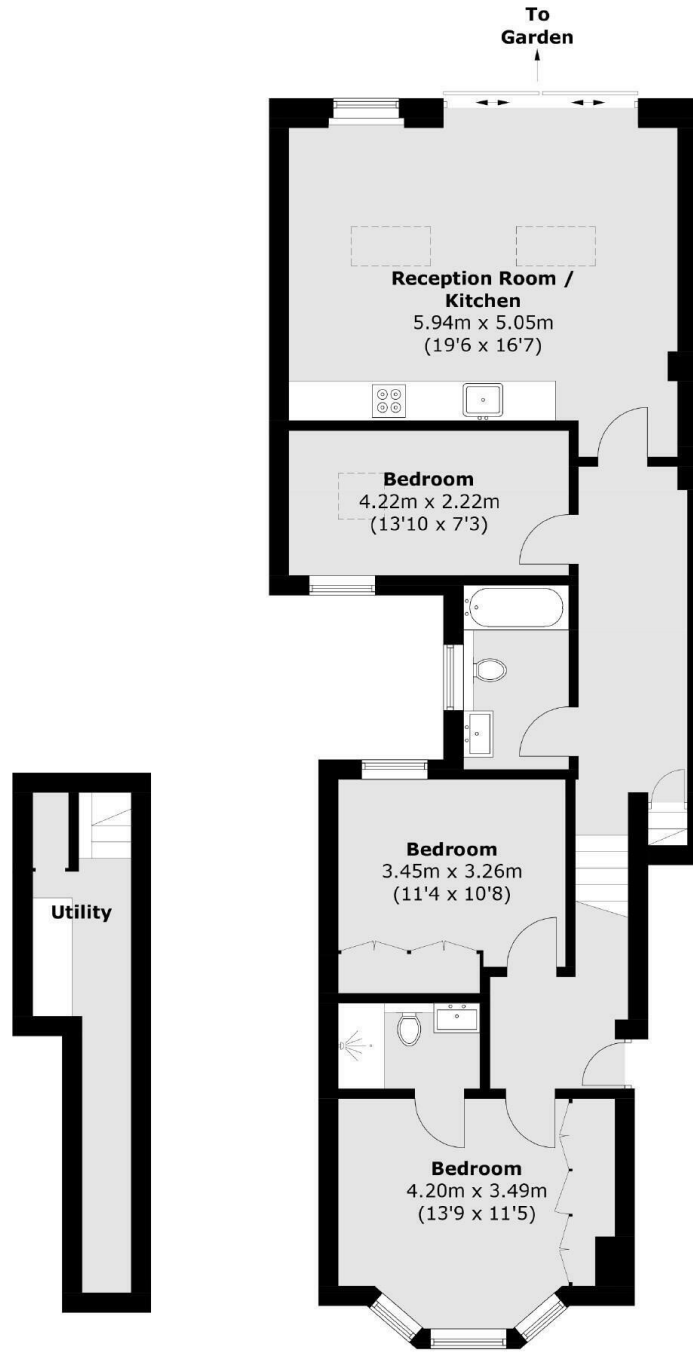
Fernlea Road is a residential road just moments from Balham mainline and underground stations, and is also well located for the amenities the area has to offer including supermarkets and several bars and restaurants. Tooting Bec Common is also within easy reach at the end of the road.

### Features

- Three Bedrooms
- Two Bathrooms
- Share Of The Freehold
- Private Parking
- Large Private Garden
- Complete Refurbishment



# Fernlea Road, Balham, SW12



**Lower Ground Floor**

**Ground Floor**

Total area (approx.): 95.9 sq. m (1,032.2 sq. ft)