



Court Farm Road, SE9

£340,000

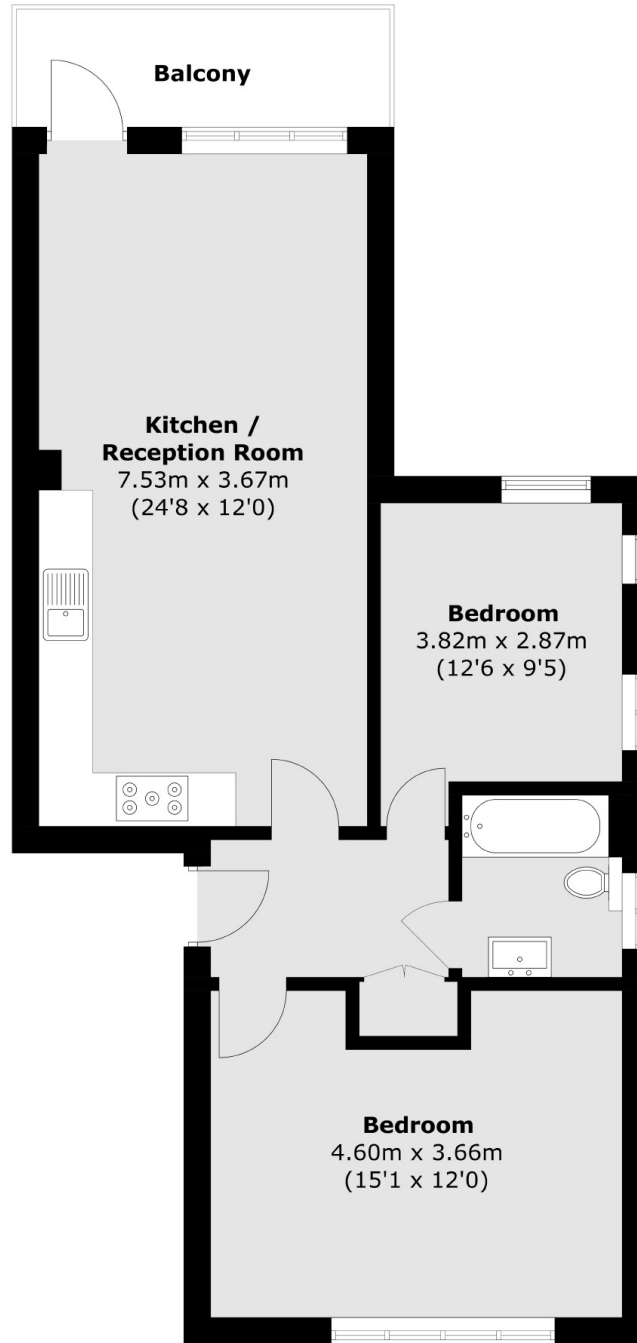
A two double-bedroom apartment with a West-facing roof terrace, access to a large communal garden and great proportions throughout. There is an allocated parking space, and a shared freehold.

Court Farm Road is well-connected in terms of transportation. Eltham Station is the closest railway station, offering regular services to London Cannon Street, London Charing Cross, and other central London destinations.

Features

- Electric Car Charging
- Two Bedrooms
- West Facing Terrace
- Share Of The Freehold
- Communal Gardens
- Allocated Parking

Court Farm Road,
London, SE9



First Floor

Total area (approx.): 63.5 sq. m (683.5 sq. ft)
Balcony: 5.5 sq. m (59.2 sq. ft)