



Court Farm Road, SE9

£250,000

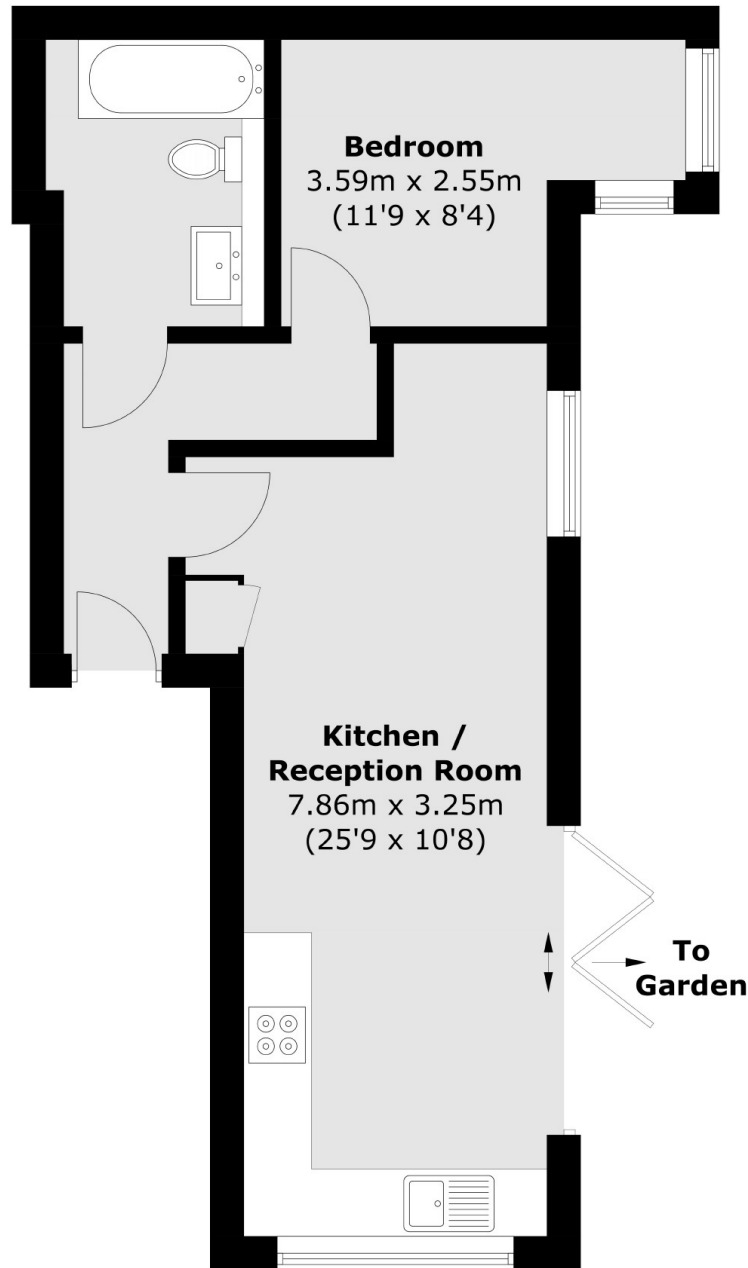
A one double-bedroom apartment, with a private garden, allocated parking space and a share of the freehold. There is a high specification throughout including underfloor heating, bi-folding doors and energy-efficient heating.

Court Farm Road is well-connected in terms of transportation. Eltham Station is the closest railway station, offering regular services to London Cannon Street, London Charing Cross, and other central London destinations.

Features

- Energy Efficient Design
- One Bedroom
- Italian Tiles
- Private Garden
- Allocated Parking Space
- Communal Gardens

Court Farm Road,
Eltham, SE9



Total area (approx.): 39.6 sq. m (426.2 sq. ft)