



Blenheim Road, SW20

£495,000

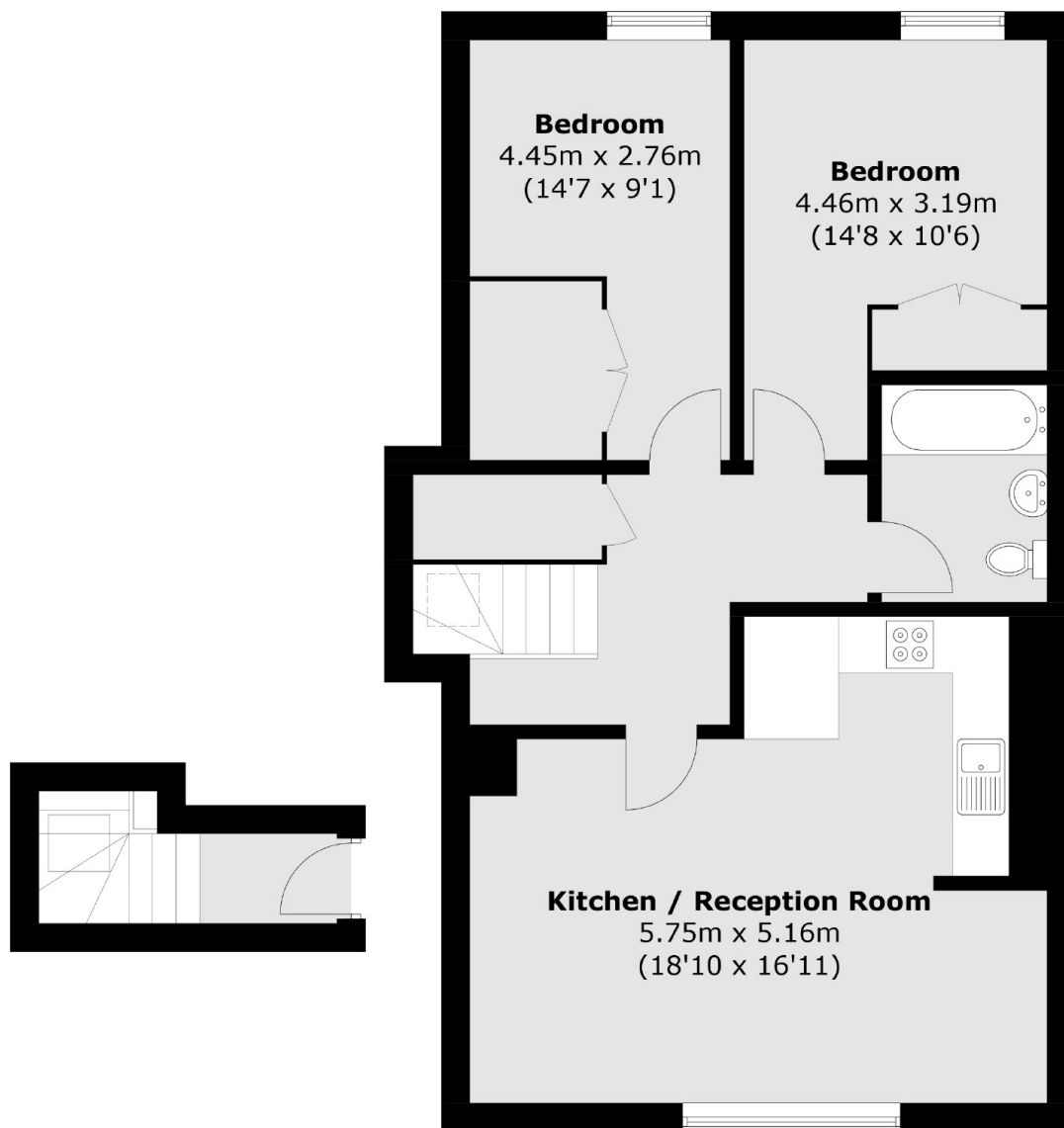
A newly constructed Edwardian period conversion on the top floor, with share of the freehold, allocated parking and communal garden. There are two double bedrooms, both with fitted wardrobes, a family bathroom and a large open plan kitchen/dining/living room.

This property is nestled within the peaceful embrace of Blenheim Road which is a cul-de-sac road discreetly positioned off Grand Drive SW20. It is nearby to Raynes Park Station which has a great service into Wimbledon, Clapham and Waterloo.

Features

- Edwardian Period Conversion
- New Build Guarantee
- Two Double Bedrooms
- Communal Gardens
- Share Of The Freehold
- Allocated Parking Space

Blenheim Road, Raynes Park, SW20



First Floor

Second Floor

Total area (approx.): 73.5 sq. m (791.1sq. ft)