

East Hill, SW18

£575,000

One East Hill is an exciting new boutique development offering eight apartments and one penthouse, located at the top of East Hill, looking across South and Central London. The apartments have been built to Passivhaus standards and designed with a contemporary style and finish.

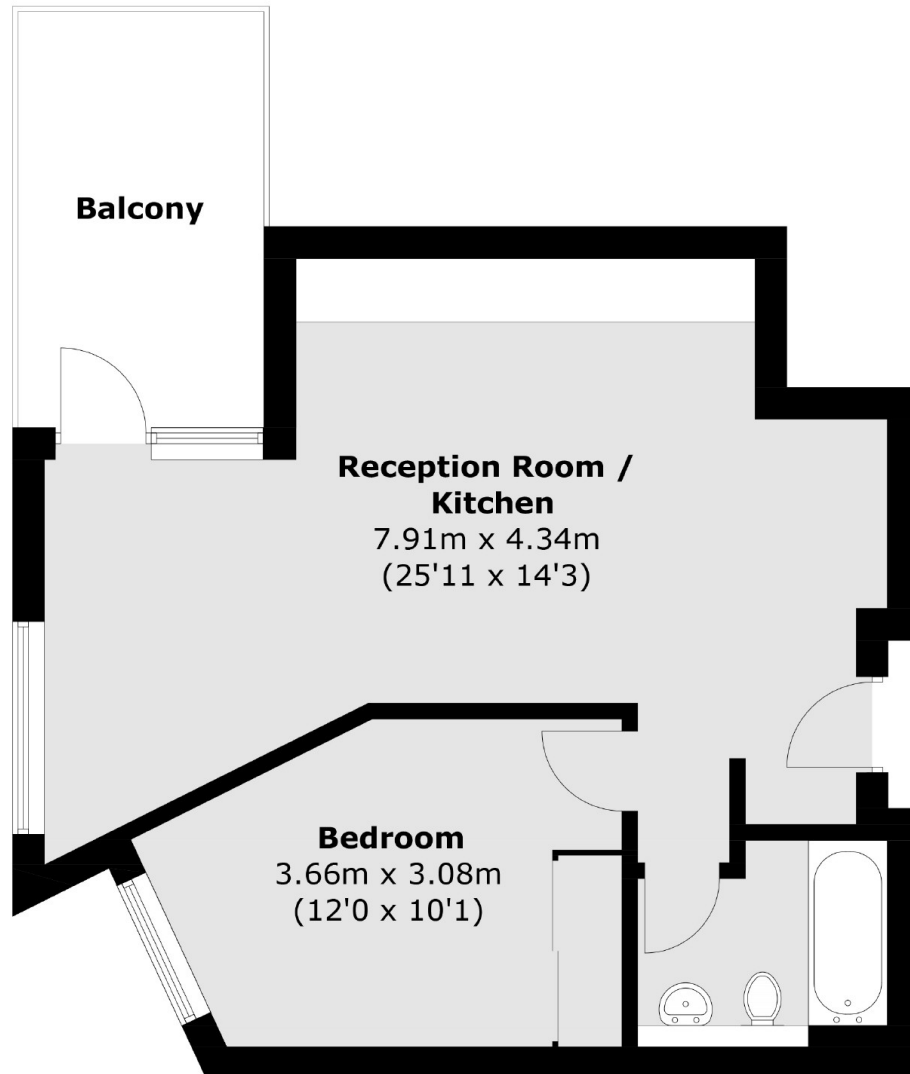
All of the apartments include a private balcony or terrace as well as access to the communal rooftop terrace and its 360-degree view of the London and Surrey skyline as well as having a fully integrated Wondrwall AI smart home and heating system.

The shops and amenities of St John's Road and Northcote Road as well as Clapham Junction station are all less than ½ mile away, whilst Wandsworth Common is just a few steps from the front door.

Features

- *Stamp Duty Paid Contribution*
- Miele and Siemens Appliances
- Secure Bicycle Storage
- Roof Top Garden
- Eco-Friendly Development
- Wandsworth Common
- Clapham Junction

East Hill, Wandsworth, SW18



Second Floor

Total area (approx.): 49.5 sq. m (532.8 sq. ft)
Balcony : 9 sq. m (96.8 sq. ft)