



## Mitcham Road, SW17

£550,000

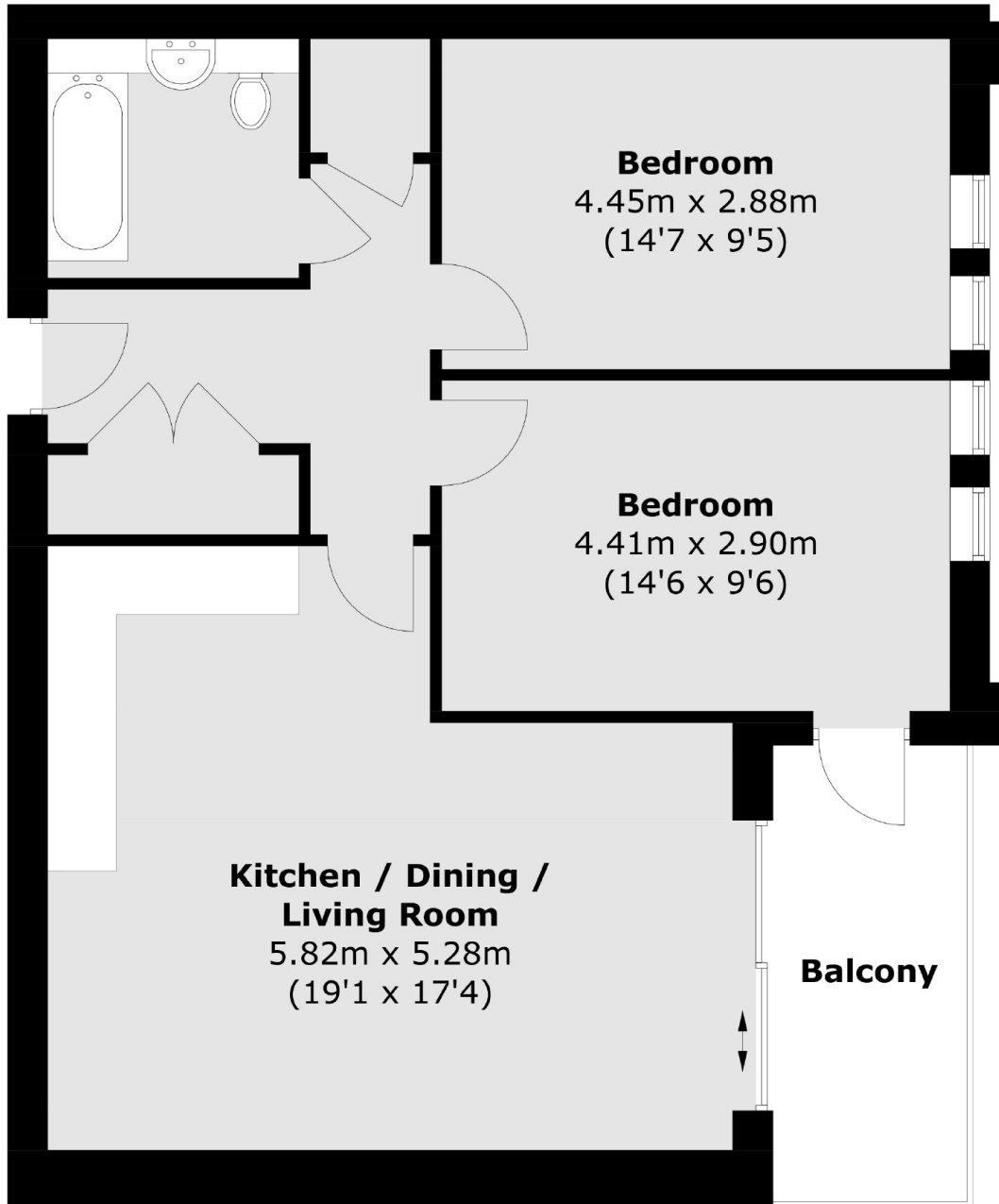
This specific unit is a South-East facing, two bedroom apartment with large private balcony. There is plenty of storage throughout, with underfloor heating and an energy efficient design ethos at heart, the running costs will be extremely low for this apartment.

Tooting is a densely populated multiracial district situated west of Streatham, recently reinvented as one of London's coolest neighbourhoods. In recent years, the district has also acquired a hipster' contingent and has been dubbed the new Shoreditch.

### Features

- Two Large Bedrooms
- One Large Bathroom
- Private Outside Space
- Near To Tooting Broadway
- East Access to Northern Line
- Extremely Popular Area
- South-East Facing
- Underfloor Heating

Mitcham Road,  
Tooting, SW17



## First Floor

Total area (approx.): 67.2 sq. m (723.3 sq. ft)  
Balcony area (approx.): 7.5 sq. m (80.7 sq. ft)

**Dexters**

New Homes South London  
12 The Broadway  
London  
SW19 1RF  
Sales  
020 8674 4555

Energy Rating: . We aim to make our particulars both accurate and reliable. However they are not guaranteed; nor do they form part of an offer or contract. If you require clarification on any points then please contact us, especially if you're traveling some distance to view. Please note that appliances and heating systems have not been tested and therefore no warranties can be given as to their good working order.

 **RICS** | Regulated  
Estate Agent  
and Letting Agent

dexters.co.uk