



Norbury Crescent, SW16

£275,000

**** 0% Stamp Duty For First Time buyers - Until 31/03/2025 ****

Step into this beautiful new build apartment that offers modern boutique luxury combined with a fantastic location. This apartment has been finished to the highest standards including top of the line Bosch appliances and spa-like bathrooms. Residents benefit from cutting edge technologies such as a touch screen controlled heating system.

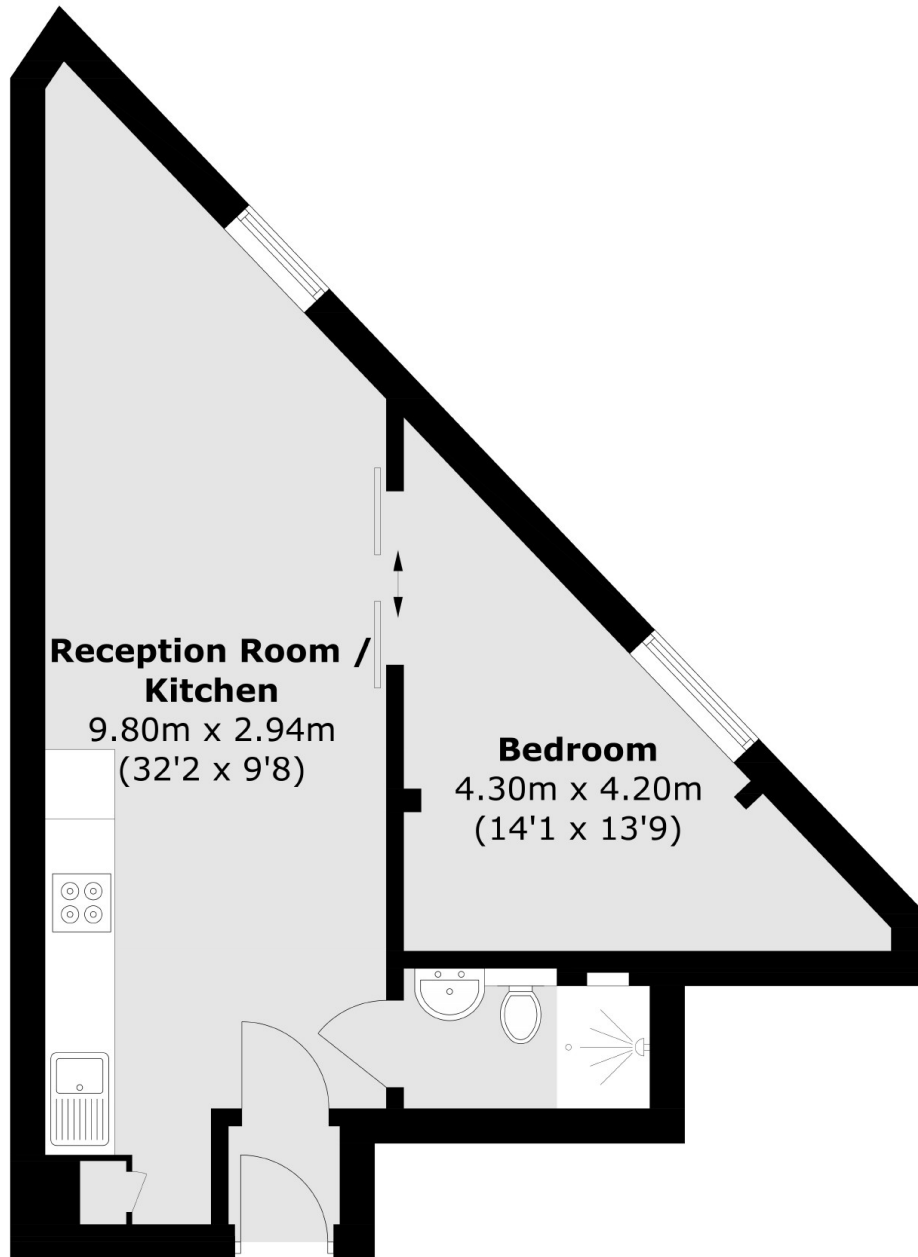
A ground floor newly converted apartment, offers a great size and high specification, all within reach of the green open spaces of Streatham Common. The green open spaces of Streatham Common are also nearby with 62 acres of green open space to enjoy included the well known Rookery.

Norbury Crescent is a popular road perfectly placed for Norbury High Street with its numerous dining and shopping options and the green open spaces of Norbury Park. Norbury mainline station offers frequent rail links to London Bridge and London Victoria.

Features

- One Double Bedroom
- Newly Converted Apartment
- Share of The Freehold
- Near To Streatham Common
- Flexible Layout
- Bosch Appliances
- High Specification Bathroom
- Walking distance to Norbury Station
- Move-in Ready!
- Practical Completion
- Estimated November 2024

Norbury Crescent, Streatham, SW16



Total area (approx.): 39.1 sq. m (420.9 sq. ft)

Dexters

New Homes South London
12 The Broadway
London
SW19 1RF
Sales
020 8674 4555

Energy Rating: . We aim to make our particulars both accurate and reliable. However they are not guaranteed; nor do they form part of an offer or contract. If you require clarification on any points then please contact us, especially if you're traveling some distance to view. Please note that appliances and heating systems have not been tested and therefore no warranties can be given as to their good working order.

 **RICS** | Regulated
Estate Agent
and Letting Agent

[dexters.co.uk](https://www.dexters.co.uk)