

Norbury Crescent, SW16

£425,000

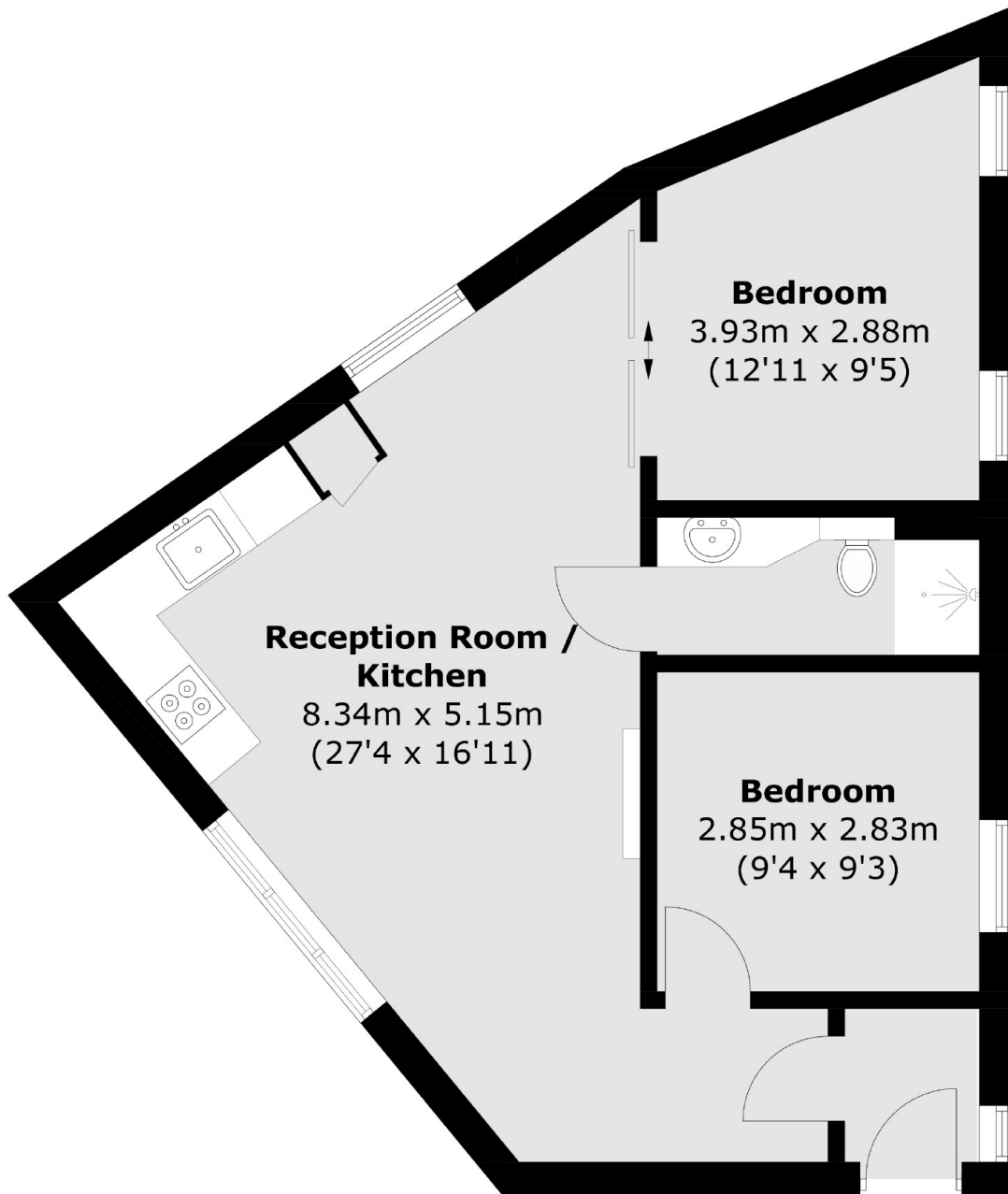
?A top floor 'penthouse' two-bedroom apartment. There is a very high specification throughout including impressive bathrooms and kitchens. The green open spaces of Streatham Common are also nearby with 62 acres of green open space to enjoy.

Norbury Crescent is a popular road perfectly placed for Norbury High Street with its numerous dining and shopping options and the green open spaces of Norbury Park. Norbury mainline station offers frequent rail links to London Bridge and London Victoria.

Features

- Two Double Bedrooms
- Top Floor Penthouse
- Share of The Freehold
- High Specification
- Near To Streatham Common
- Near To Norbury Station

Norbury Crescent,
Streatham, SW16



Total area (approx.): 52.2 sq. m (561.9 sq. ft)