



**Yelverton Road, SW11**

**£1,395,000**

**Dexters**



## Yelverton Road, SW11

A three double bedroom penthouse apartment with three bathrooms and an underground parking space. There are two balconies both with river and London City Skyline views. There is underfloor heating throughout and an extremely high specification throughout.

\*\* Please note some show home photography has been used \*\*

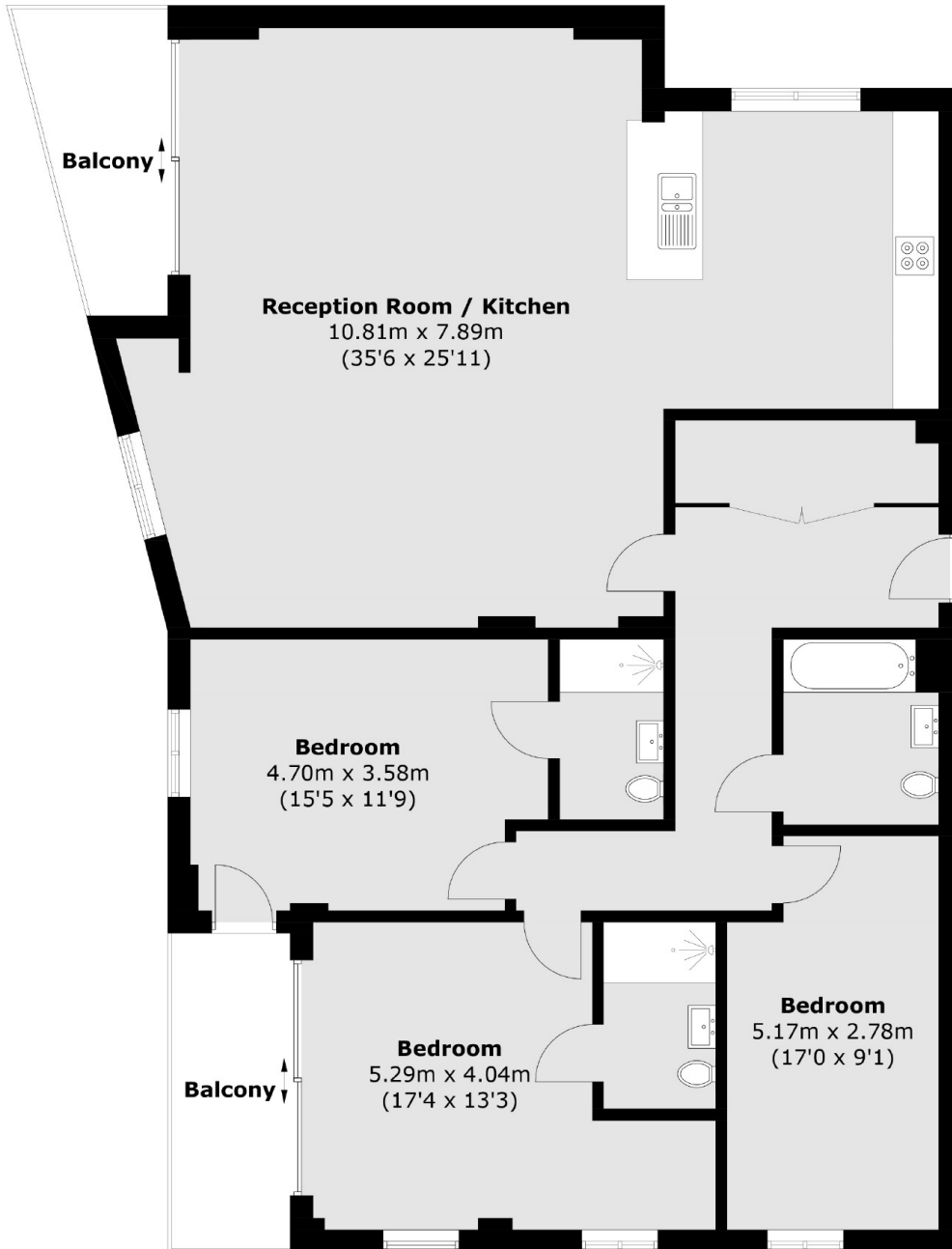
York Road is conveniently located for access to Clapham Junction Station as well as the nightlife of both Clapham and Battersea. Near to both Battersea Power Station & Chelsea you are never far from food, drinks and entertainment. Blue badge parking is also available.

### Features

- Underground Gated Parking
- Allocated Parking (1x or 2x)
- Large Lateral Penthouse
- Three Double Bedrooms
- Three Bathrooms
- Two Balconies



# Yelverton Road, Battersea, SW11



## Sixteenth Floor

Total area (approx.): 147.3 sq. m (1,585.5 sq. ft)  
Balcony: 12.7 sq. m (136.7 sq. ft)