

## Fernlea Road, SW12

£625,000

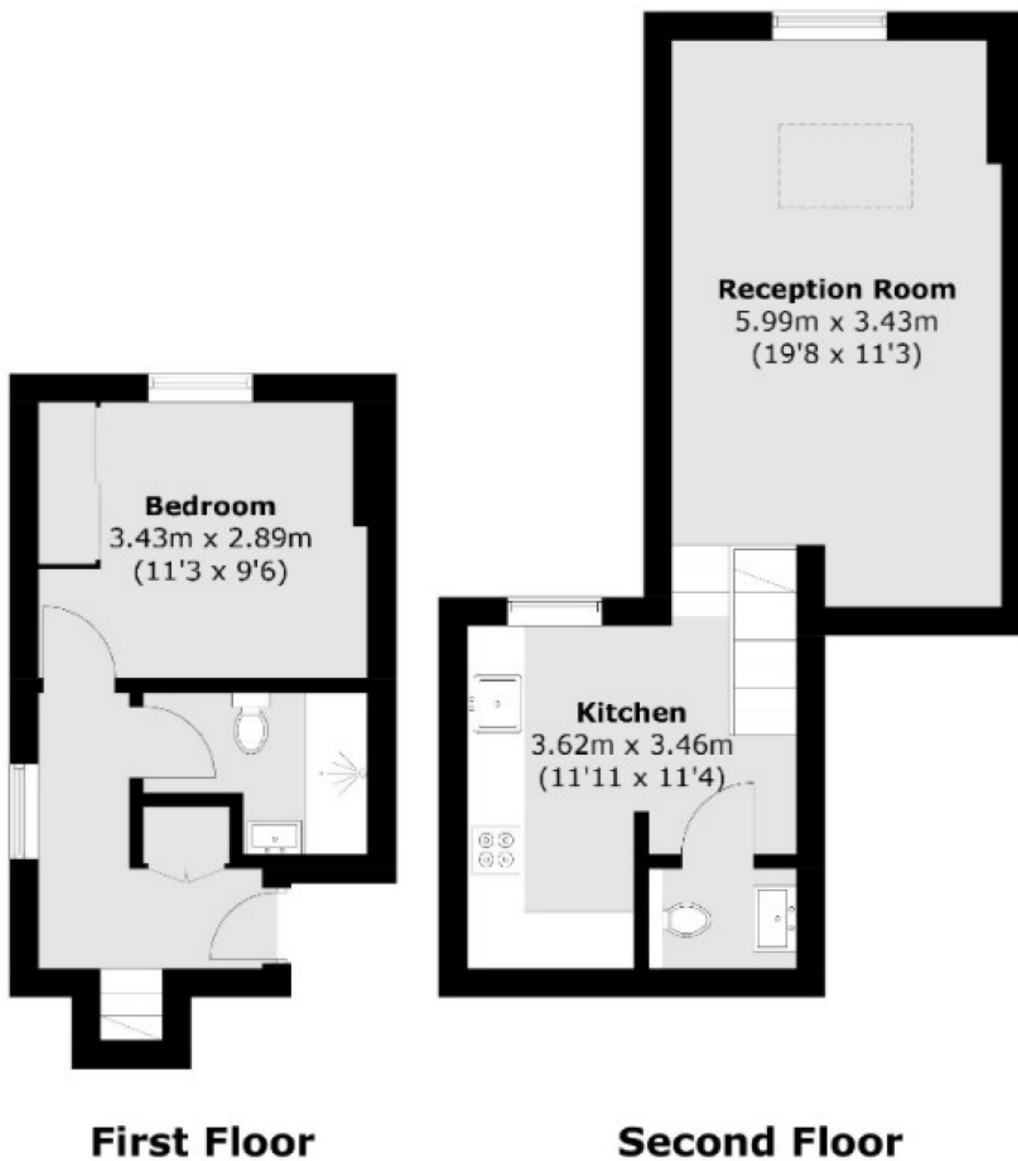
Located in central Balham under half a mile from the tube, train and high street is this brand newly refurbished and immaculately presented split level one bedroom apartment. There is a share of the freehold within the building too split just three ways.

Fernlea Road is a residential road just moments from Balham mainline and underground stations, and is also well located for the amenities the area has to offer including supermarkets and several bars and restaurants. Tooting Bec Common is also within easy reach at the end of the road.

### Features

- Split Level Period Conversion
- Share Of The Freehold
- One Large Bedroom
- Fully Refurbished
- Central Balham Location
- Separate WC

# Fernlea Road, Balham, SW12



Total area (approx.): 53.0 sq. m (570.5 sq. ft)