



## Yelverton Road, SW11

£655,000

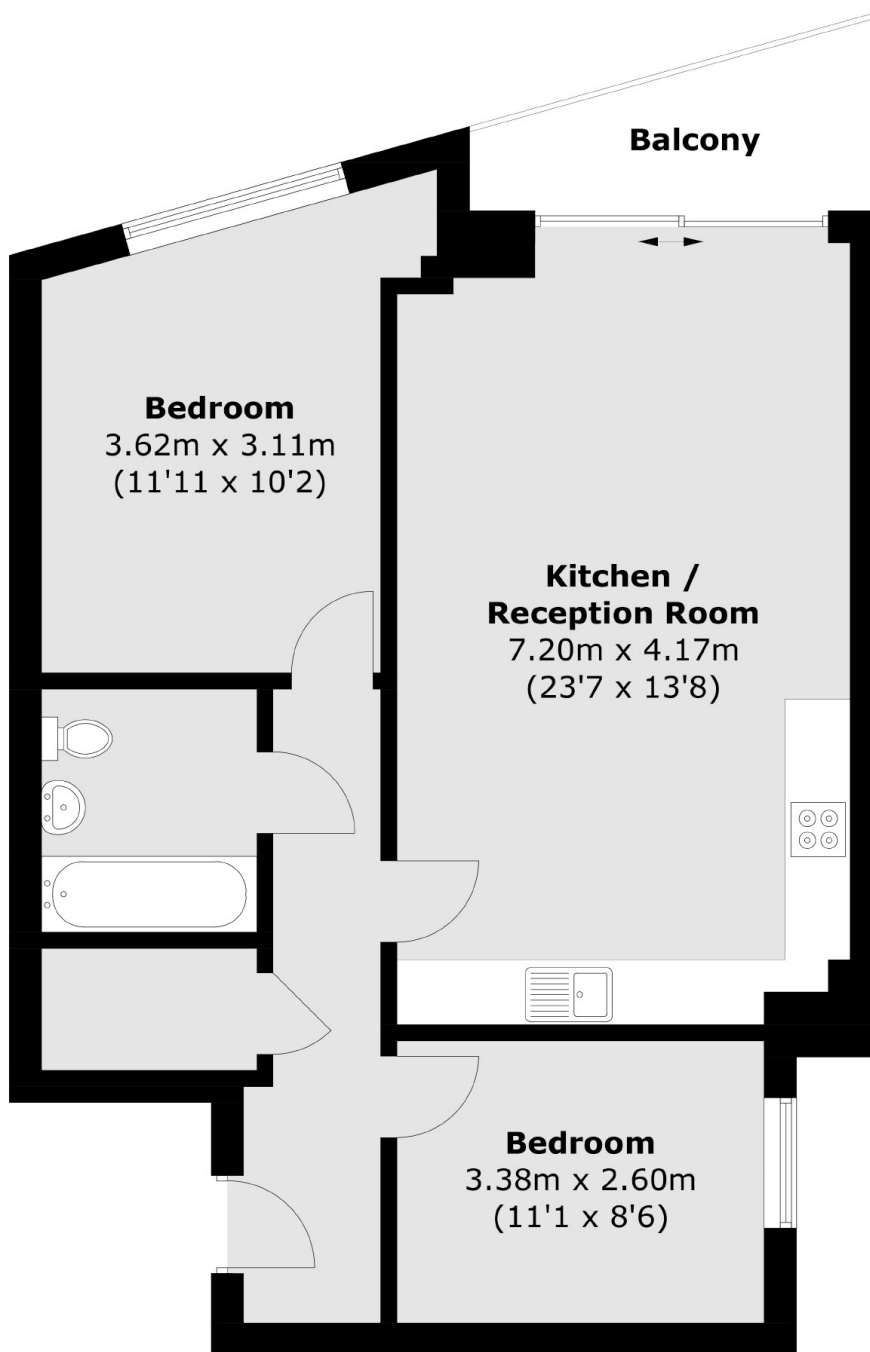
A large lateral apartment with far reaching views on the fifteenth floor. There is a useful storage room, mechanical ventilation system and underfloor heating. There is a communal podium garden as well as a concierge and bike store within the development.

Yelverton Road Is conveniently located for access to Clapham Junction Station as well as the nightlife of both Clapham and Battersea. Near to both Battersea Power Station & Chelsea you are never far from food, drinks and entertainment.

### Features

Fifteenth Floor  
+ 700 Square Feet  
Two Double Bedrooms  
Concierge In Building  
Near To Battersea Park  
Near Battersea Power Station

Yelverton Road,  
Battersea, SW11



Total area (approx.): 68.1 sq. m (733.0 sq. ft)  
Balcony: 4.7 sq. m (50.6 sq. ft)

**Dexters**

New Homes South London  
12 The Broadway  
London  
SW19 1RF  
Sales  
020 8674 4555

Energy Rating: . We aim to make our particulars both accurate and reliable. However they are not guaranteed; nor do they form part of an offer or contract. If you require clarification on any points then please contact us, especially if you're traveling some distance to view. Please note that appliances and heating systems have not been tested and therefore no warranties can be given as to their good working order.

 **RICS** | Regulated  
Estate Agent  
and Letting Agent

dexters.co.uk