



## Blenheim Close, SW20

### £1,150,000

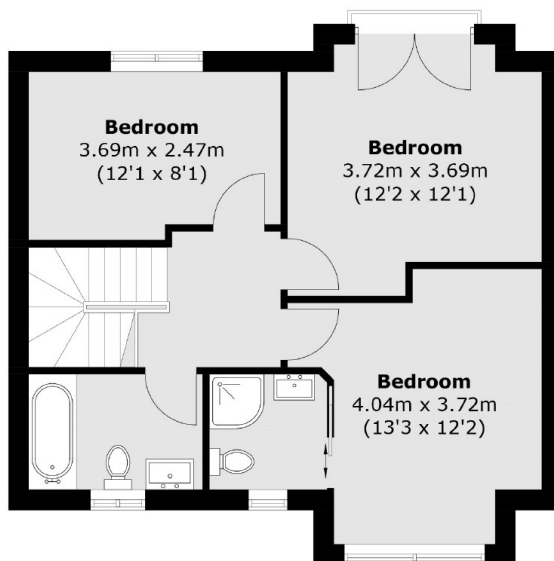
A charming semi-detached, 3/4 bedroom, 2 bathroom, additional toilet and ample storage offering a perfect blend of comfort and style. The home offers a spacious and versatile layout, ideal for accommodating your family's needs.

This property is nestled within the peaceful embrace of Blenheim Close which is a cul-de-sac road discreetly positioned off Grand Drive SW20. It is nearby to Raynes Park Station which has a great service into Wimbledon, Clapham and Waterloo.

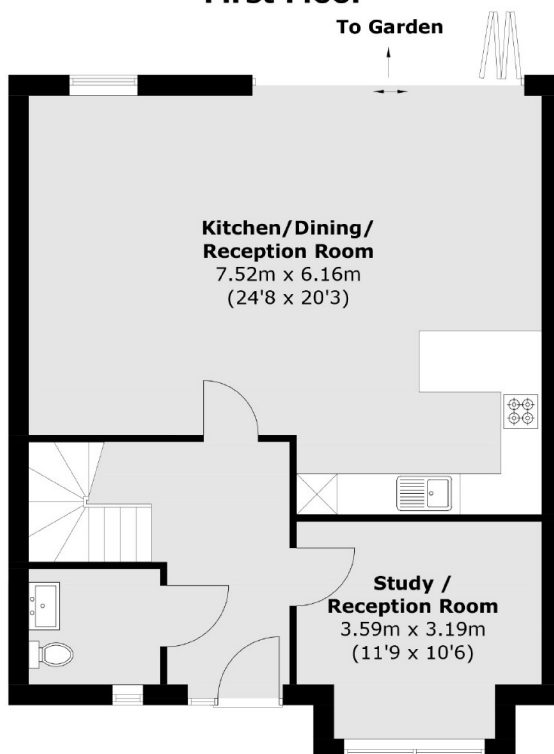
### Features

- Freehold Family Homes
- Three/Four Bedrooms
- Two Bathrooms
- Large Private Garden
- Off Street Parking
- Good Local Schools

# Blenheim Close, London, SW20



**First Floor**



**Ground Floor**

Total area (approx.): 116.3 sq. m (1,251.8 sq. ft)