



East Hill, SW18

£635,000

One East Hill is an exciting new boutique development offering eight apartments and one penthouse, located at the top of East Hill, looking across South and Central London. The apartments have been built to Passivhaus standards and designed with a contemporary style and finish. All of the apartments include a private balcony or terrace as well as access to the communal rooftop terrace and its 360-degree view of the London and Surrey skyline as well as having a fully integrated Wondrwall AI smart home and heating system.

Located on the first floor, this apartment comes with a spacious kitchen living space, one large bedroom, a bathroom, plenty of storage, and a private balcony. The property comes with a balcony spacious enough for outdoor furniture. Complimented with Miele and Siemens appliances and integrated smart home controls for hot water and central heating. Completing Sept/Oct 24

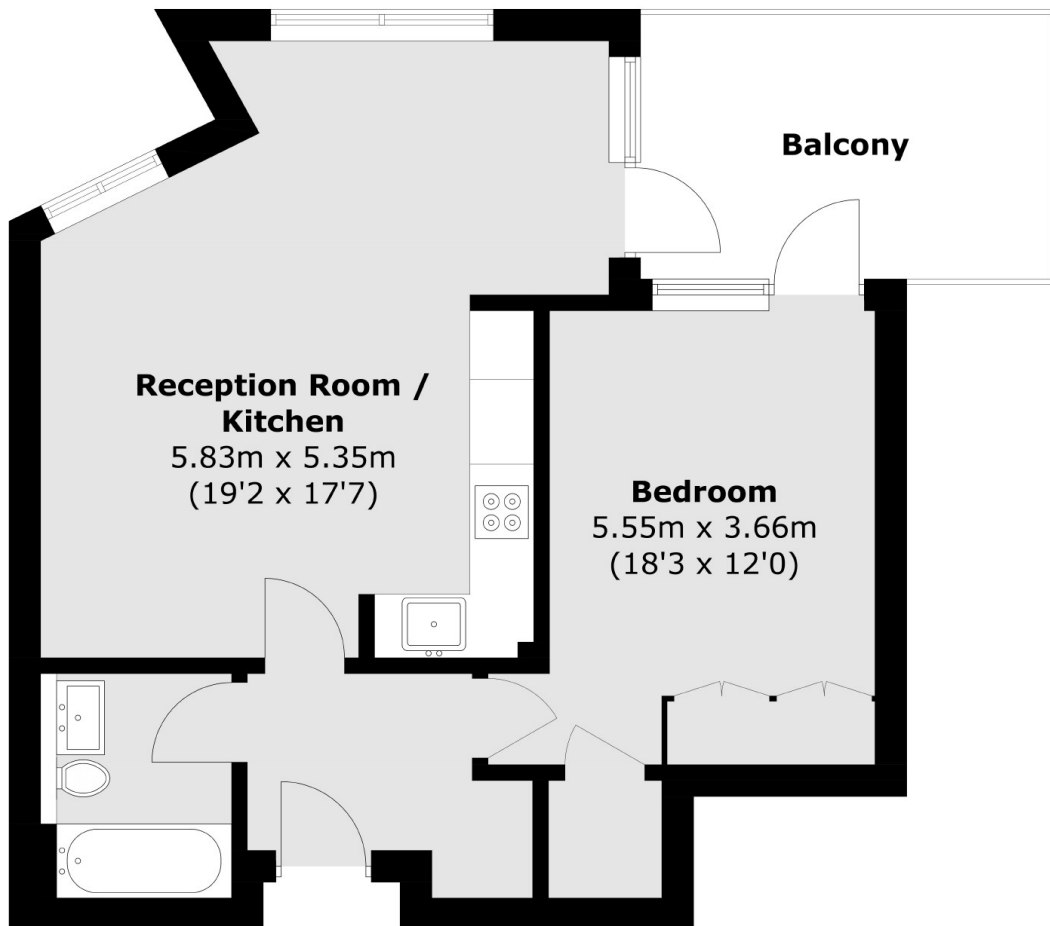
.**Launching Saturday 21st September between 11am - 2pm!**

The shops and amenities of St John's Road and Northcote Road as well as Clapham Junction station are all less than ½ mile away, whilst Wandsworth Common is just a few steps from the front door.

Features

- Launching Saturday 21st September
- Stamp Duty Paid Contribution
- One Bedroom
- One Bathroom
- Floor To Ceiling Windows
- Miele and Siemens Appliances
- Secure Bicycle Storage
- Roof Top Garden
- Eco-Friendly Development

East Hill, Wandsworth, SW18



Total area (approx.): 51.7 sq. m (556.5 sq. ft)
Balcony area (approx.): 9.7 sq. m (104.4 sq. ft)