



## East Hill, SW18

£700,000

\*\* Stamp Duty Paid - Contribution Available \*\*

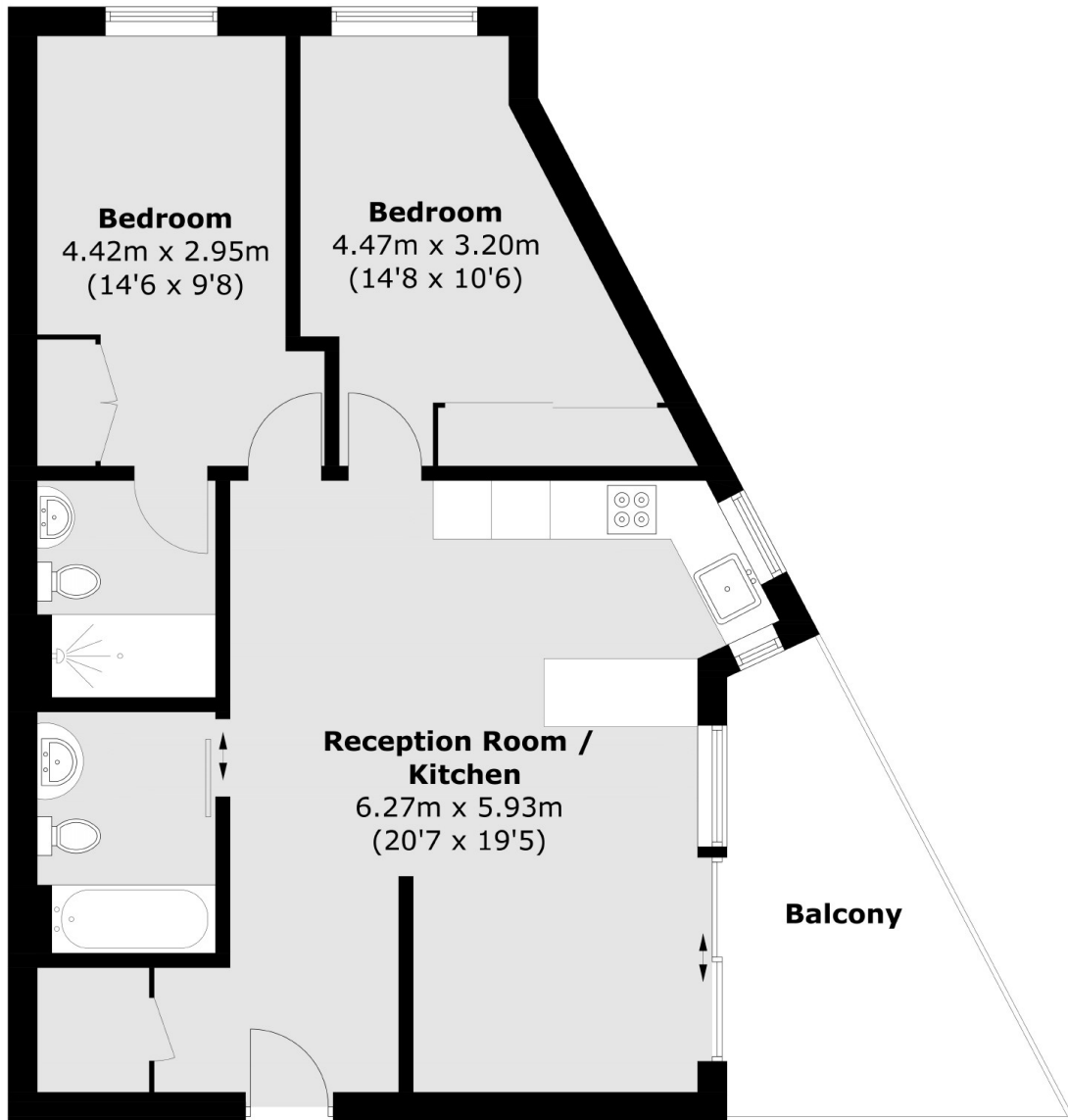
Located on the first floor with a dual aspect, this spacious apartment provides two double bedrooms and two bathrooms. The property comes with a balcony spacious enough for outdoor furniture. Extensive storage space throughout the apartment, Miele and Siemens appliances and integrated smart home controls for hot water and central heating. Completing December 2024

The shops and amenities of St John's Road and Northcote Road as well as Clapham Junction station are all less than ½ mile away, whilst Wandsworth Common is just a few steps from the front door.

### Features

- \*Stamp Duty Paid Contribution\*
- Two Bedrooms
- Two Bathrooms
- Dual Aspect
- Miele and Siemens Appliances
- Secure Bicycle Storage
- Roof Top Garden
- Eco-Friendly Development

# East Hill, Wandsworth, SW18



Total area (approx.): 69.9 sq. m (752.4 sq. ft)  
Balcony : 10.7 sq. m (115.2 sq. ft)