



East Hill, SW18

£700,000

**** Stamp Duty Paid - Contribution Available **** One East Hill is an exciting new boutique development offering eight apartments and one penthouse, located at the top of East Hill, looking across South and Central London. The apartments have been built to Passivhaus standards and designed with a contemporary style and finish. All of the apartments include a private balcony or terrace as well as access to the communal rooftop terrace and its 360-degree view of the London and Surrey skyline as well as having a fully integrated Wondrwall AI smart home and heating system.

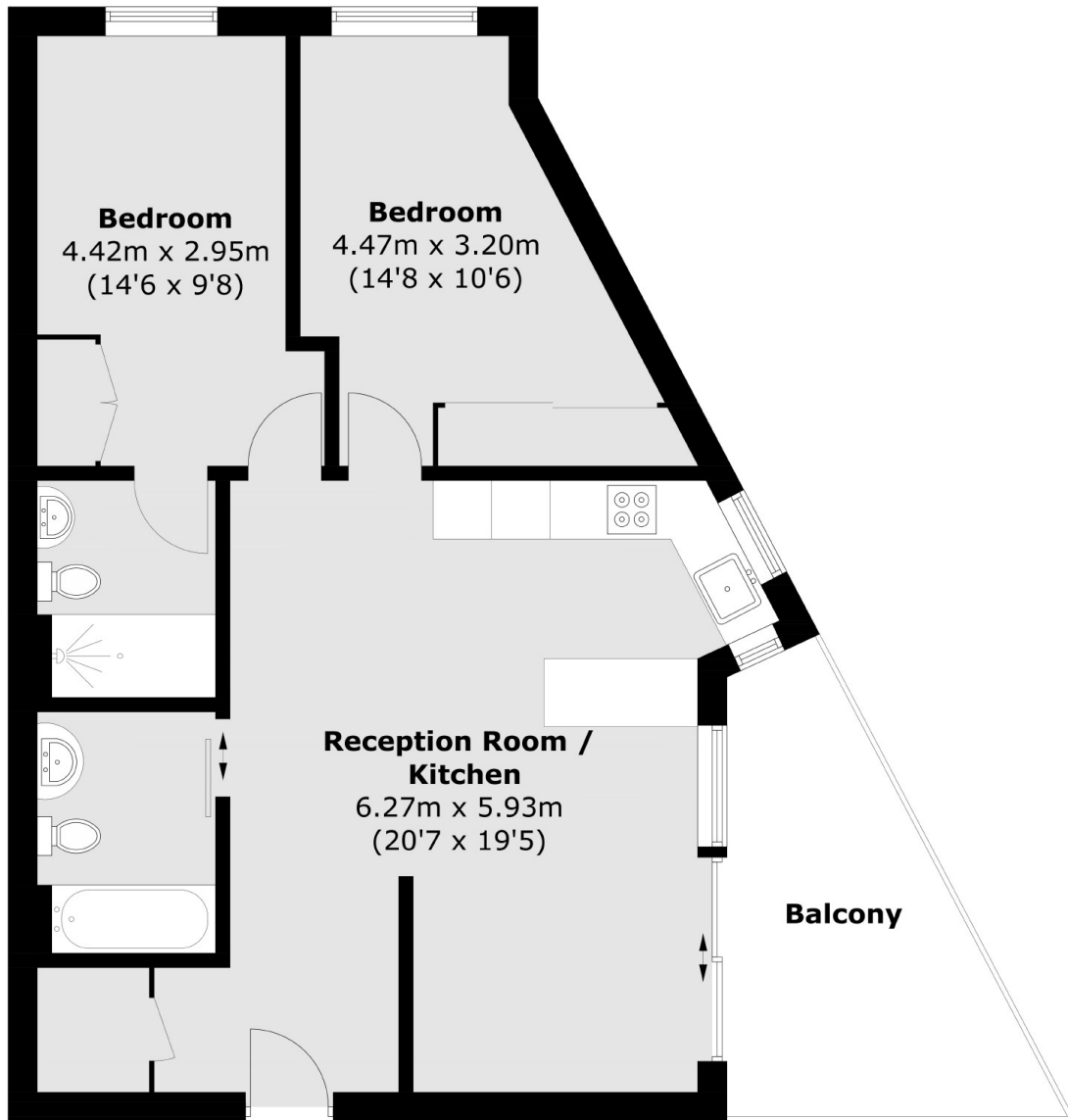
Located on the first floor with a dual aspect, this spacious apartment provides two double bedrooms and two bathrooms. The property comes with a balcony spacious enough for outdoor furniture. Extensive storage space throughout the apartment, Miele and Siemens appliances and integrated smart home controls for hot water and central heating. Completing Sept/Oct 24

The shops and amenities of St John's Road and Northcote Road as well as Clapham Junction station are all less than ½ mile away, whilst Wandsworth Common is just a few steps from the front door.

Features

- Stamp Duty Paid Contribution
- Two Bedrooms
- Two Bathrooms
- Dual Aspect
- Miele and Siemens Appliances
- Secure Bicycle Storage
- Roof Top Garden
- Eco-Friendly Development

East Hill, Wandsworth, SW18



Total area (approx.): 69.9 sq. m (752.4 sq. ft)
Balcony : 10.7 sq. m (115.2 sq. ft)