



East Road, SW19

£775,000

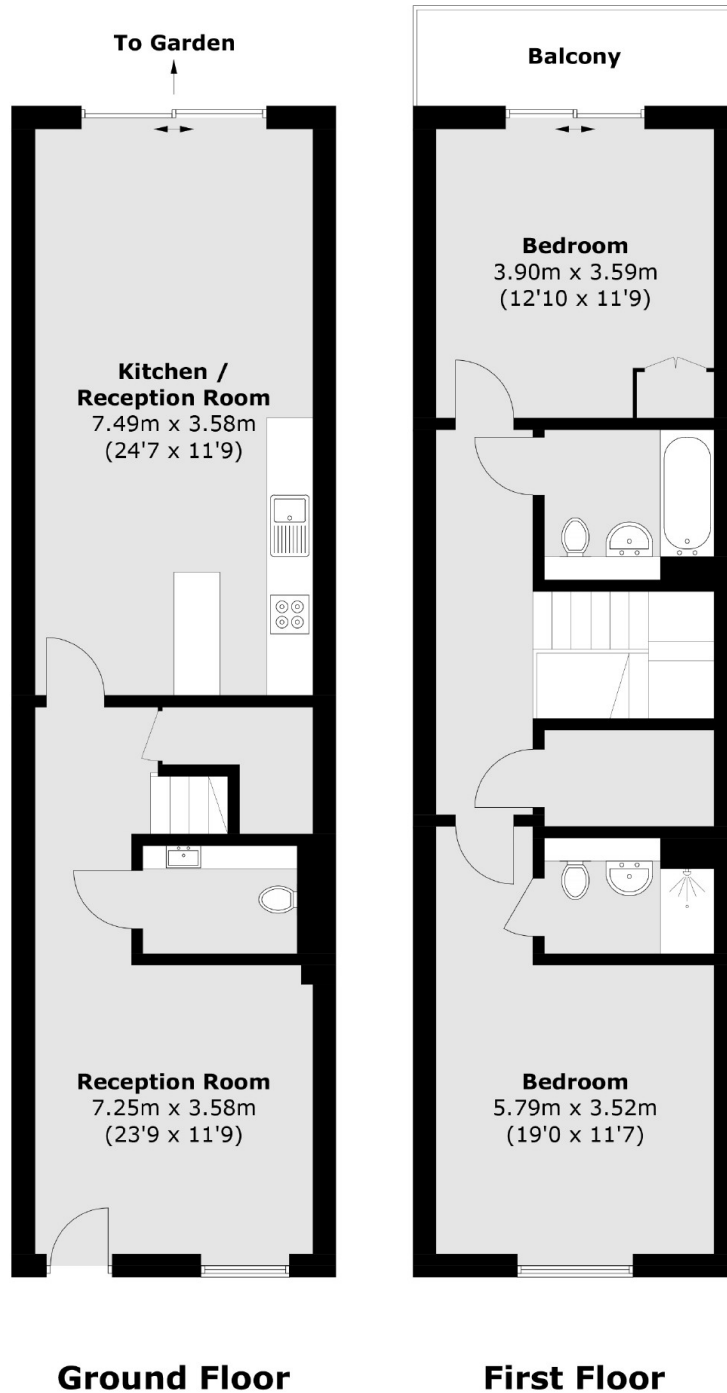
A three bedroom, two bathroom duplex apartment. Downstairs there is a large kitchen/reception room with access to private garden, downstairs W.C and third bedroom/reception room on the first floor you have two double bedrooms and two bathrooms.

East Road is a tucked away quiet location with the benefit of being close to Wimbledon and transport at Colliers Wood Northern Line. The green open spaces of the Wandle Meadow Nature Park and Haydons Road Recreation Ground are also very nearby.

Features

- Three Bedrooms
- Two Bathrooms + W.C
- Private Garden + Balcony
- Allocated Parking Space
- Flexible Layout
- Own Front Door

East Road,
London, SW19



Total area (approx.): 106.2 sq. m (1,143.1 sq. ft)
Balcony: 5.1 sq. m (54.9 sq. ft)