



Carnation Way, SW8
£7,800,000

Dexters



Carnation Way, SW8

A five-bedroom, four-bathroom apartment with River & City views. Occupying half of the entire forty first floor, this large lateral apartment has River & Canary Wharf Skyline views. Expanding to over 3,000 square feet.

A collection of one, two and three-bedroom apartments with incredible amenities and stunning views across London. Facilities include gymnasium, 30m swimming pool and spa, cinema room, business centre, kids' club, 24-hour concierge, video door entry/intercom to the concierge, on-site security with CCTV footage, and private residents' entrance lobby.

Thames City is conveniently located for transport via Vauxhall Underground (Victoria Line) and Overground with the many facilities of Battersea Power Station right around the corner. Green open spaces are easily accessible at both Vauxhall & Battersea Park.

Features

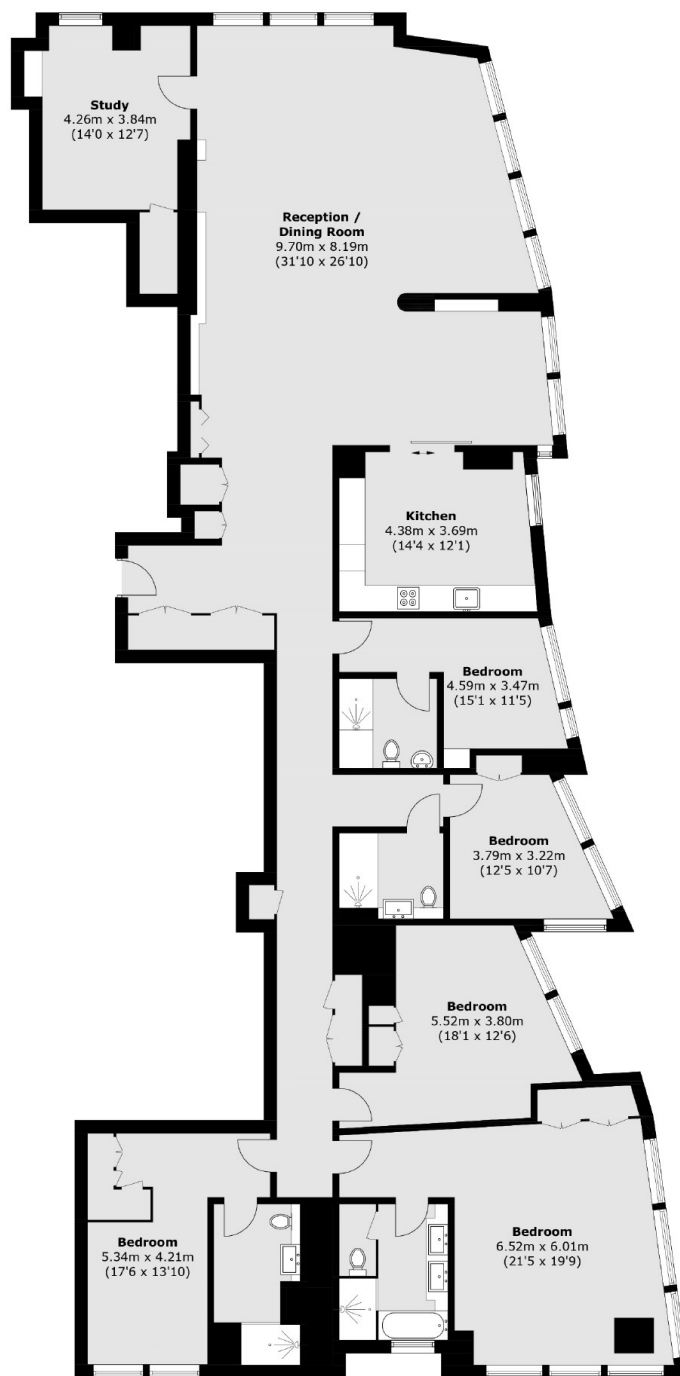
- Swimming Pool/Gym
- Five Bedrooms
- Four Bathroom
- Incredible Location - Nine Elms
- Close To Transport - Vauxhall







Carnation Way, Vauxhall, SW8



Forty Second Floor

Total area (approx.): 274.9 sq. m (2,959.0 sq. ft)

Dexters

New Homes South London
12 The Broadway
London
SW19 1RF
Sales
020 8674 4555

Energy Rating: . We aim to make our particulars both accurate and reliable. However they are not guaranteed; nor do they form part of an offer or contract. If you require clarification on any points then please contact us, especially if you're traveling some distance to view. Please note that appliances and heating systems have not been tested and therefore no warranties can be given as to their good working order.

 **RICS** | Regulated
Estate Agent
and Letting Agent

[dexters.co.uk](https://www.dexters.co.uk)