

Elder Road, SE27

£375,000

A 1 double-bedroom apartment, occupying the entire top floor of this period conversion. There is a southwest-facing roof terrace and a large open-plan kitchen/reception with separate dining space. All with a share of the freehold.

Specification-wise, the property comes fully fitted with a beautifully fitted Hacker Concept 130 Kitchen, made in Germany, along with integrated Italian Smeg appliances, a washer dryer, dishwasher, oven, hob and extractor as well as a fridge with ice box.

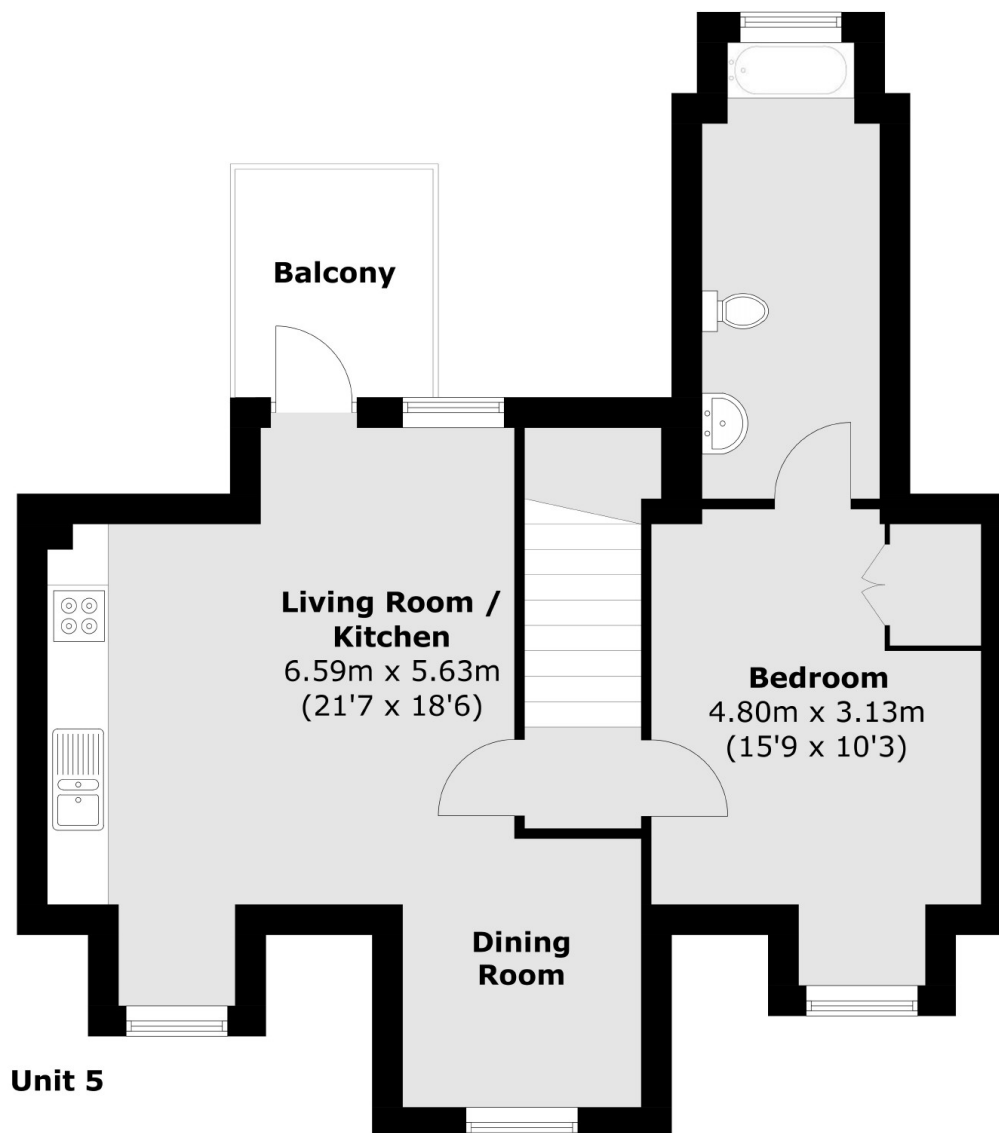
Situated directly opposite Norwood Park with views across the hilly 33-acre municipal green space with wooded and play areas, a cafe, and panoramic city views.

The Park Tavern is a beautiful Victorian pub establishment, having first opened its doors in 1867 and being situated directly opposite Norwood Park. Elder Road is a short walk away from West Norwood station offering connections to London Victoria and London Bridge. Shops and restaurants are all located on West Norwood High Street and Streatham Common is a great park to enjoy nearby.

Features

- One Double Bedroom
- Small Bespoke Development
- Large Kitchen/Living Room & Separate Dining Space
- South-West Facing Terrace
- Share Of The Freehold

Elder Road, West Norwood, SE27



Second Floor

Total area (approx.)
Unit 5 - 54.0 sq. m (581.2 sq. ft)