



East Road, SW19

£750,000

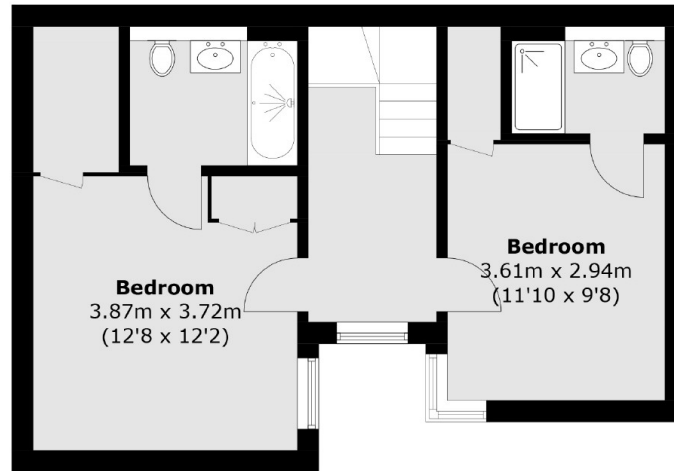
A two double bedroom house, with two bathrooms and plenty of storage, located in a quiet and secure development. There are highly energy efficient appliances, underfloor heating and an air source heat pump. Allocated parking is available.

East Road is a tucked away location with the benefit of being well located but also a quiet area close to Colliers Wood Northern Line. The green open spaces of the Wandle Meadow Nature Park and Haydons Road Recreation Ground are also very nearby.

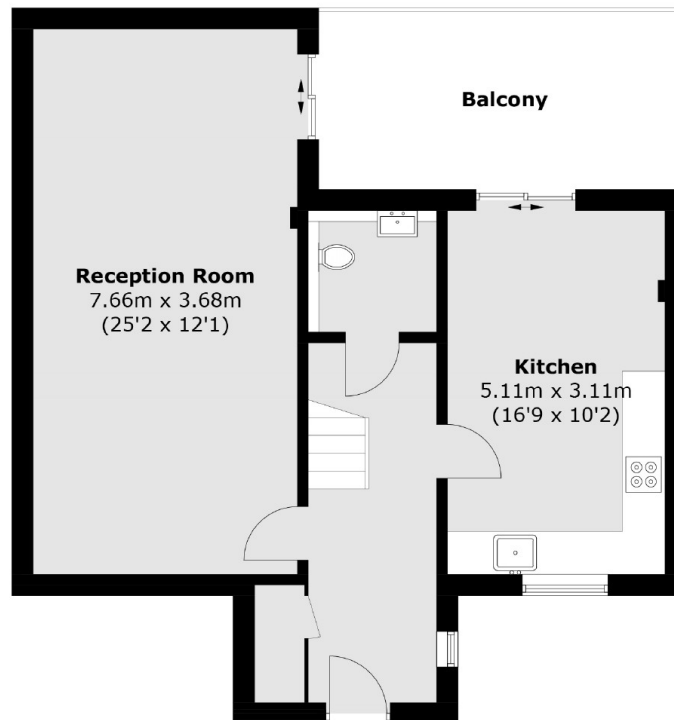
Features

- Two Bedroom House
- Gym, Workspace & Concierge
- Two Bathrooms + W.C
- Allocated Parking Space **
- Large Storage Spaces
- Private Resident Lounge & Gym

East Road,
Wimbledon, SW19



First Floor



Ground Floor

Total area (approx.): 106.4 sq. m (1,145.3 sq. ft)
Balcony : 12.7 sq. m (136.7 sq. ft)