



Elder Road, SE27

£475,000

A two bedroom, one bathroom Victorian Conversion. There is a large West Facing Roof terrace. Internally the property has energy efficient heating allowing for low running costs, with a high specification finish including German Kitchens and Italian appliances.

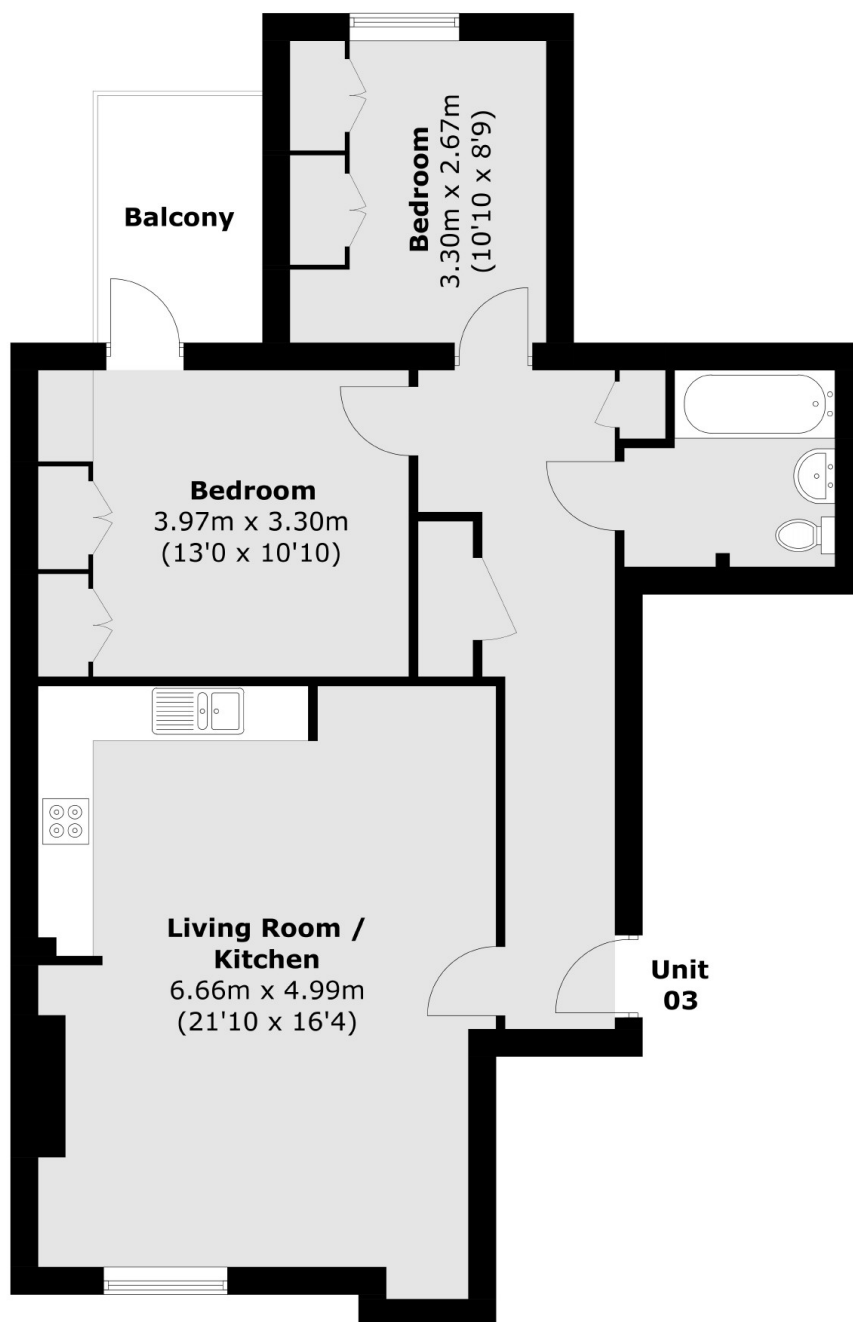
The development is signed up to free Zipcar Car Club Membership and free Cycle Club Membership with TFL for 3 years for both.

The Park Tavern is a beautiful old Victorian pub building, having first opened its doors in 1867 and being situated directly opposite Norwood Park. Elder Road is a short walk away from West Norwood Station offering connections to London Victoria and London Bridge. Shops and restaurants are all located on West Norwood High Street and Streatham Common is a great park to enjoy nearby.

Features

- Private Outside Space
- Share Of The Freehold
- Bespoke Five Flat Development
- Victorian Pub Conversion
- High Specification
- All With Private Outside Space
- Up And Coming Location
- Very Green Area

Elder Road, West Norwood, SE27



First Floor

Total area (approx.): 70.0 sq. m (753.5 sq. ft)
Balcony area : 4.8 sq. m (51.7 sq. ft)