

Elder Road, SE27

£475,000

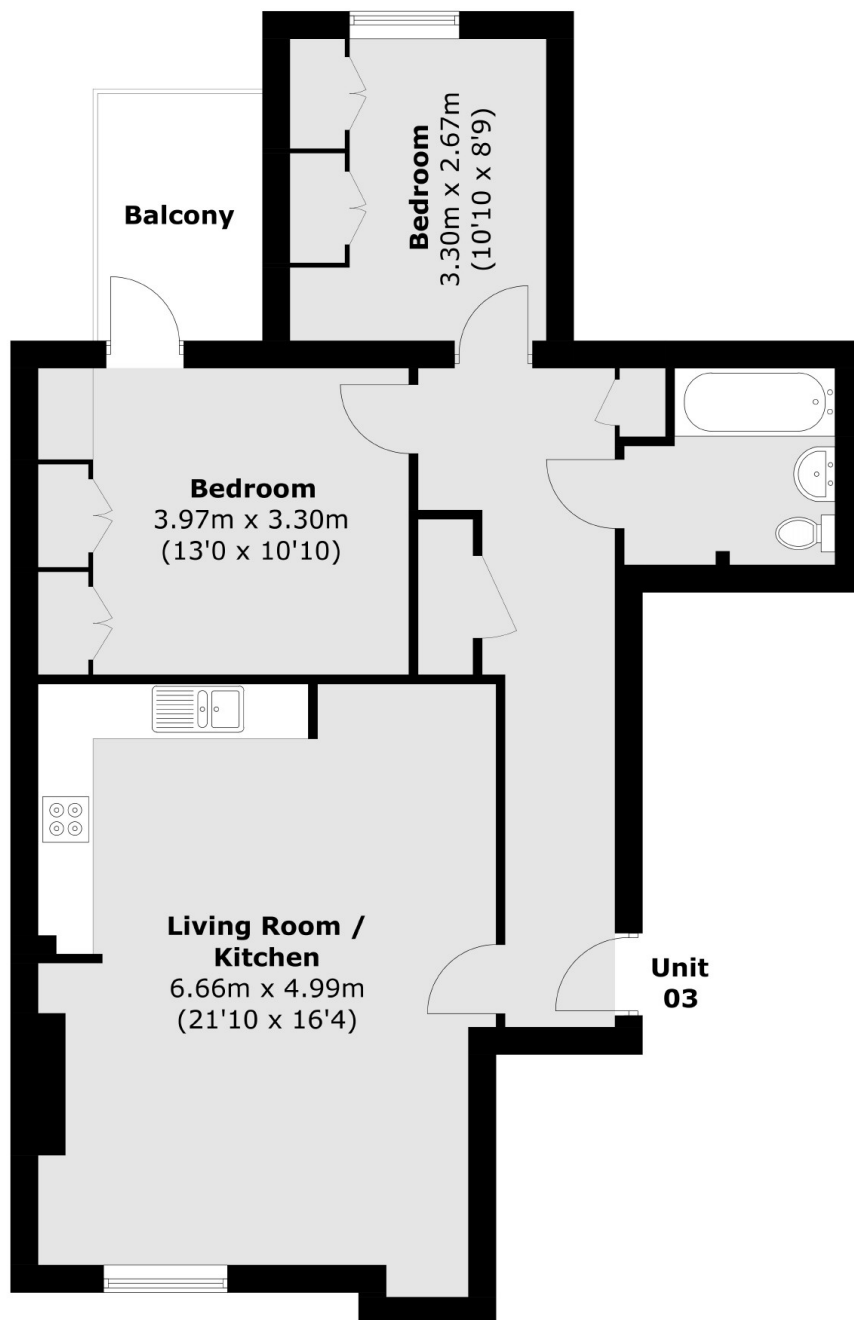
A two bedroom, one bathroom Victorian Conversion. There is a large West Facing Roof terrace. Internally the property has energy efficient heating allowing for low running costs, with a high specification finish including German Kitchens and Italian appliances.

?The Park Tavern is a beautiful old Victorian pub building, having first opened its doors in 1867 and being situated directly opposite Norwood Park. Elder Road is a short walk away from West Norwood Station offering connections to London Victoria and London Bridge. Shops and restaurants are all located on West Norwood High Street and Streatham Common is a great park to enjoy nearby.

Features

?Share Of The Freehold
Bespoke Five Flat
Development
Victorian Pub Conversion
High Specification
All With Private Outside Space
Up And Coming Location
Very Green Area

Elder Road,
West Norwood, SE27



First Floor

Total area (approx.): 70.0 sq. m (753.5 sq. ft)
Balcony area : 4.8 sq. m (51.7 sq. ft)