



## Nine Elms Lane, SW8

£1,145,000

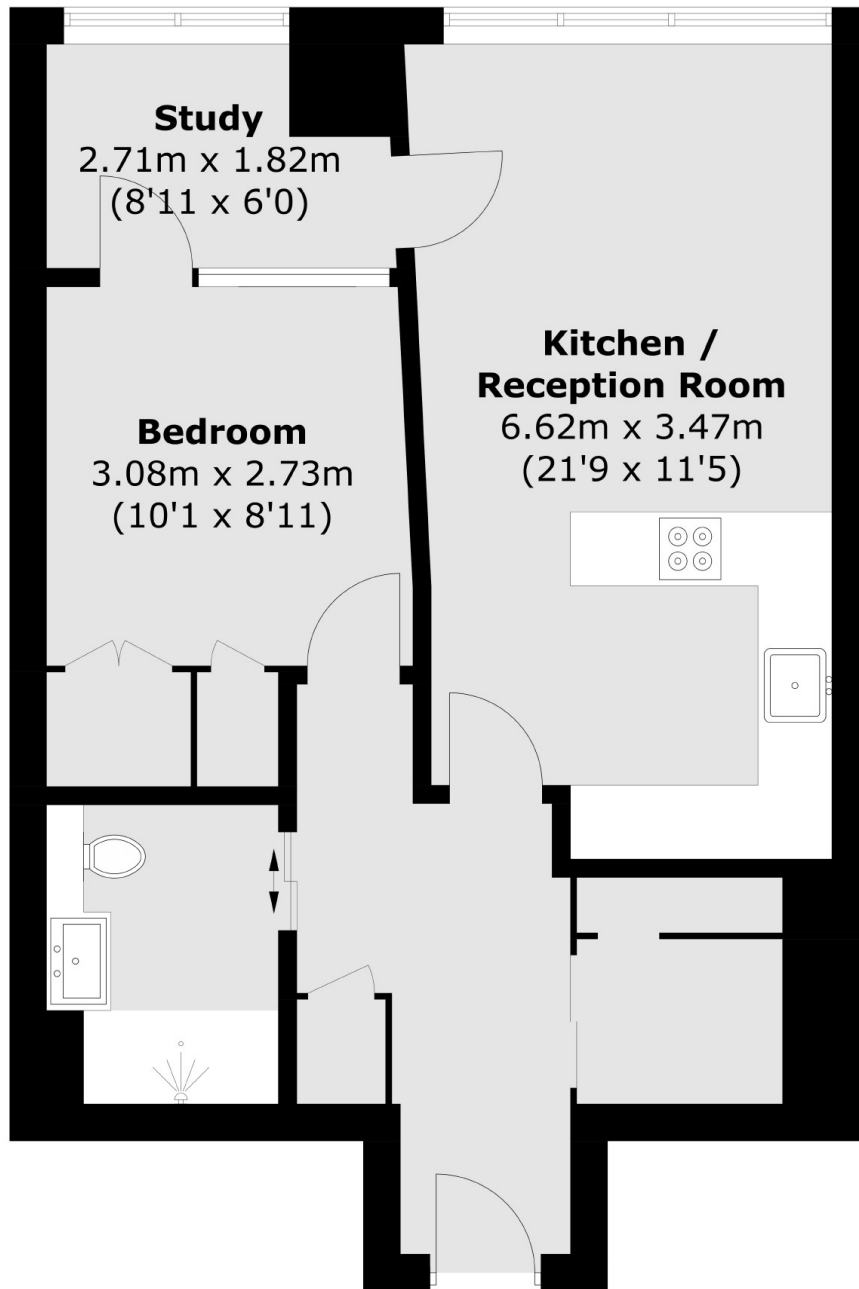
A large lateral one double bedroom apartment with study space on the 22nd floor with epic views across the River Thames & towards Battersea Power station. The building boasts a gym, children's play area, meeting rooms, as well as a fully fitted gym.

River Park Tower is conveniently located for transport being just a three minute walk to Vauxhall Underground (Victoria Line) and Overground with the many facilities of Battersea Power Station right around the corner. Nine Elms offers a variety of green open spaces which are all easily accessible.

### Features

- Ready To Move Into - Q3/Q4
- One Large Bedroom
- 24 Hour Concierge
- Incredible Location - Nine Elms
- Close To Transport - Vauxhall
- Underfloor Heating
- Cinema Room
- Residents Gym

# Nine Elms Lane, Vauxhall, SW8



## Twenty Eighth Floor

Total area (approx.): 55.9 sq. m (601.7 sq. ft)