



Nine Elms Lane, SW8 £1,634,000

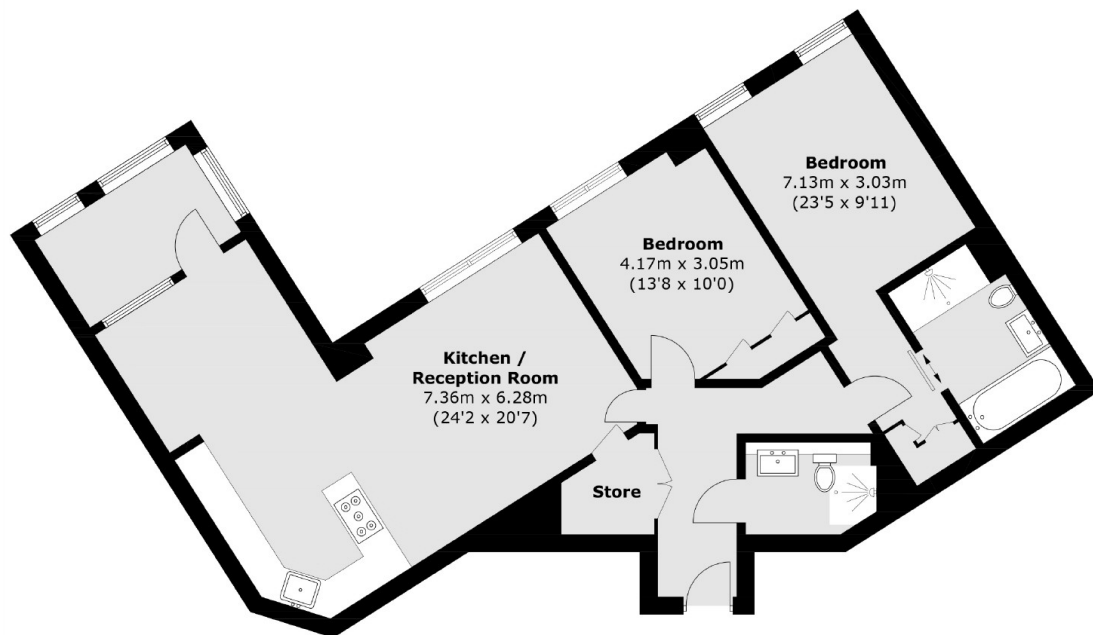
A really exceptional apartment with epic views across the London skyline and the River Thames. There are two bedrooms, two bathrooms and plenty of storage. Within the building there are plenty of facilities including a gym, cinema room and children's play area.

River Park Tower is conveniently located for transport being just a three minute walk to Vauxhall Underground (Victoria Line) and Overground with the many facilities of Battersea Power Station right around the corner. Nine Elms offers a variety of green open spaces which are all easily accessible.

Features

- Ready To Move Into - Q3/Q4
- One Large Bedroom
- 24 Hour Concierge
- Incredible Location - Nine Elms
- Close To Transport - Vauxhall
- Underfloor Heating
- Cinema Room
- Residents Gym

Nine Elms Lane,
London, SW8



Total area (approx.): 90.8 sq. m (977.3 sq. ft)