



## Kingsmead Road, SW2

£700,000

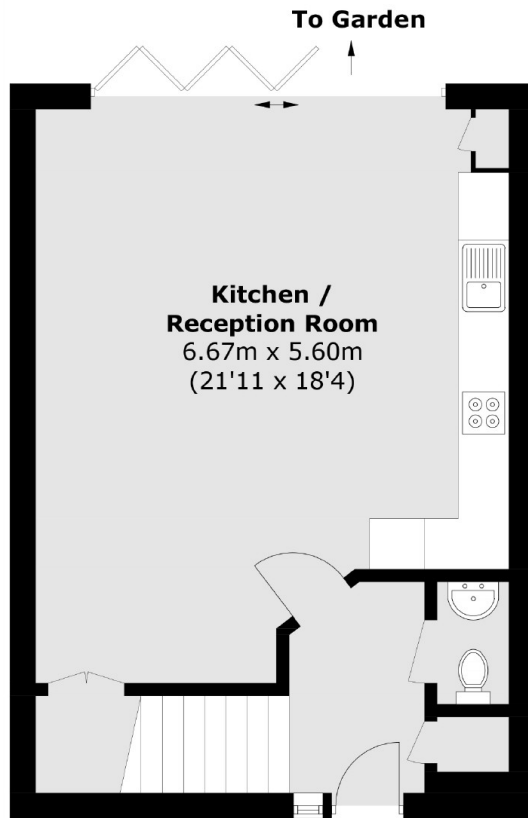
Quietly tucked away in a gated mews is this highly energy-efficient home, including gas central heating and solar panels on the roof. There are two double bedrooms with built-in wardrobes, two bathrooms and a downstairs W.C. Topped off with a large private garden.

One of the most sought-after streets in the Streatham Hill/Tulse Hill area, perfectly positioned for both Streatham & Dulwich High streets and within easy reach of Tulse Hill station providing fast rail links to the city. The green open spaces at Brockley park are also nearby.

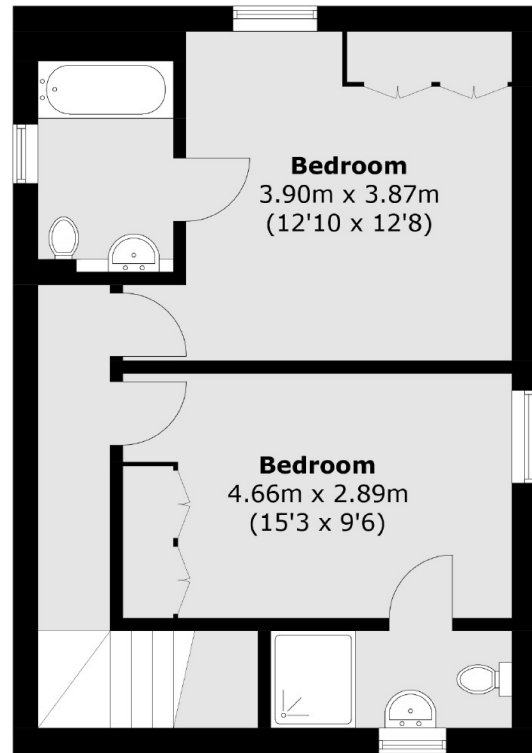
### Features

- Two Double Bedrooms
- Two Bathrooms
- Photovoltaic Solar Panels
- EPC "A" Rating
- Downstairs W.C + Storage
- Large Private Garden

Kingsmead Road,  
Brixton, SW2



**Ground Floor**



**First Floor**

Total area (approx.): 92.3 sq. m (993.5 sq. ft)