



Arklow Road, SE14

£540,000

A two double bedroom, two bathroom apartment with large balcony. There is underfloor heating throughout, a Kers heat recovery system and high end German appliances there is also allocated parking is available within the building.

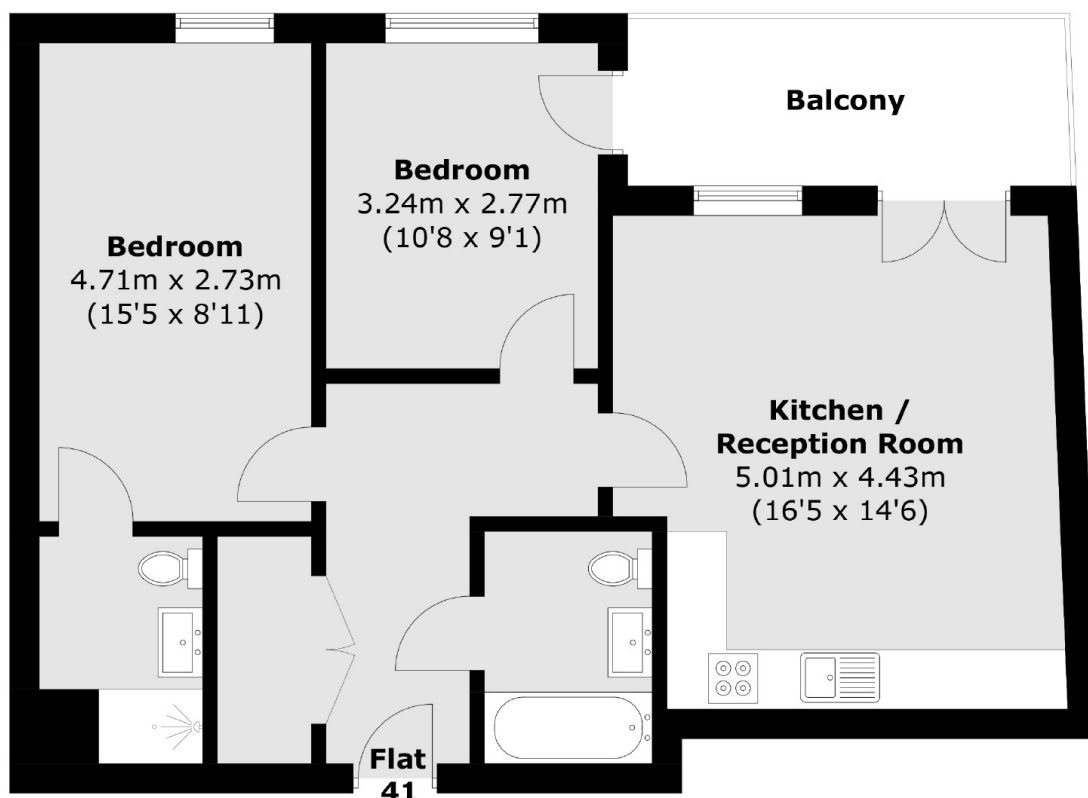
** Show Home Photographs

Arklow Road is conveniently located in one of South London's busiest commuter belts, within easy access to New Cross & Deptford Station. The green open spaces of both Deptford & Greenwich Park are also very nearby.

Features

- Two Double Bedrooms
- Two Bathrooms
- Large Roof Terrace/Balcony
- Air Source Heat Pump (Kers)
- Underfloor Heating
- High End German Appliances

Arklow Road,
London, SE14



Fifth Floor

Total area (approx.): 65.2 sq. m (701.8 sq. ft)
Balcony: 7.6 sq. m (81.8 sq. ft)